

HMC S STETTLER  
22 OCTOBER/44  
28 JANUARY  
1945.

**S. 322** (Revised—October, 1935)

5M Bks.—4-43 (9648) K.P. 5079  
N.S. 815-9-322

---

## **DECK LOG BOOK**

---

For use at Sea and in Harbour

22/10/44 - 28/1/45



EXTRACTS FROM ARTICLES 863, 1167 AND 1208 KING'S REGULATIONS AND ADMIRALTY INSTRUCTIONS, 1926.

\* \* \* \* \*  
863(2). The deck logs (S.322) are to be retained in the ship or on deposit for four years and are to be available for forwarding if required. After this period they may be destroyed.  
\* \* \* \* \*

\* \* \* \* \*  
1167(3). Whenever a collision, or narrow escape from a collision, occurs, care should be taken to preserve \* \* \* the deck log \* \* \*. Entries are not to be erased, but, if correction is found to be necessary, the entry should be crossed through so that the correction may be shown, and the alteration initialled.  
\* \* \* \* \*

\* \* \* \* \*  
1208(3). ENTRIES.—He will be particular that all the particulars required by the established form of log are correctly entered in the log book, in addition to the following circumstances and all other occurrences of moment:—

(a) Notice of Main Engines for steam to be entered daily at noon and of any alteration. Times of weighing and proceeding.

(b) STRANGE SHIPS OBSERVED.—The arrivals, departures, the meeting at sea or finding at anchor of H.M. Ships and ships of war of all nations, transports and fleet auxiliaries. Salutes and ceremonies. Halfmasting and rehoisting colours; dressing ship, the occasion being stated.

(c) Every occurrence connected with the navigation of the ship and with discovered dangers; the set and velocity of the currents or tides; the result of all observations made, and angles or bearings taken to ascertain the ship's position; besides the currents between noon and noon when at sea, those experienced on leaving and making the land, or when running along the land are to be recorded, the number of hours between the observations being given.

(d) Peculiarities of the weather, sea and other atmospheric and natural phenomena, and other circumstances worthy of note. The height of the barometer and thermometer at 0000, 0400, 0800, 1200, 1600, 1800, 2000. In stormy weather the barometer should be noted every hour. Occasional notation of roll. Whenever the clocks are altered, the fact is to be noted in the remarks column, and a notation of the zone time being kept is to be made daily at noon.

(e) When in company the position of the leading ships is to be recorded, and the necessary particulars as to the ship herself and the other ships if out of station, especially at night.

(f) The anchoring or mooring the ship, giving depth of water, amount of cable, and position by bearings or the securing the ship to a wharf or buoy. The draught of water, fore and aft, before sailing and on arrival in harbour.

(g) Evolutions, exercises and landing on service or for drill; the closing of watertight doors.

(h) The employment of the ship's company. The daily inspection of the ship's company at divisions, evening quarters; holding Divine Service and reading of Prayers. The leave given, stating to which watch or part of the watch.

(i) The embarkation and disembarkation of all passengers.

(j) The entry and discharge of officers, and ratings, the number only of the latter to be given.

(k) Details and times of any accidents occurring on board or injury to important store articles or fittings; any damage caused by or to vessels berthing alongside. The circumstances of the loss of all important stores. It will be sufficient to specify in the log only the description of the important articles, making reference to the complete list kept with the store accounts where alone the details need be shown.

(l) The names of colliers, oilers and fleet auxiliaries and also the names or descriptions of lighters, etc., berthing alongside, with the times of arrival and departure, and the purpose for which brought alongside.

(m) Details of aircraft sighted in flight at sea, together with the time of the observation and, if possible, the marks of identification of the machine. Movements of fleet aircraft working with the Fleet need not be entered.

(n) The particulars of the hire of any vessel, boat, wharf or building for the service of the ship.

(o) All general payments.

(p) All punishments requiring warrants, the serial numbers being noted.

(q) Births and deaths on board. See 869 (*Births and Deaths to be reported to Registrar-General of Births, Deaths and Marriages*).



# DECK LOG BOOK

## For use at Sea and in Harbour

1. This Deck Log Book is to be carefully preserved. When not in use, it is to be kept in a painted canvas cover, or in a watertight box. When filled, it is to be taken charge of by the Captain, and kept on board for reference, if required.
2. The Officer of the Watch is responsible for the Deck Log, and for the due observance of the regulations respecting it; and he is to see that it is properly written up, in pencil, and he will sign it with the initials of his name before he leaves the Deck.
3. The readings of the Patent Log or Logs to be entered hourly in the column provided for the purpose. In the column marked "Distance Run," the distance through the water for each hour is to be registered according to the judgment of the Officer of the Watch, using the Log readings, their errors if known and the Revolutions as a guide, with allowances for the Wind and Sea. When the Ship has steered on more than one course during the hour, the distance run on each course must be entered.
4. The Standard or Gyro Compass Course, the Direction and Force of the Wind, and the State of the Weather, Sea and Swell, are to be registered at the end of each Watch, and when any change may occur in the same.
5. The corrected Barometric Pressure in millibars and the Temperature of the Air and Sea are to be registered at 0400, 0800, 1200, 1600, 1800, 2000 and 2400; but in Stormy Weather, the corrected Barometric Pressure in millibars is to be registered every hour. In the case of mercurial barometers, the correction to be applied to the reading of the instrument can be obtained by means of the "Gold slide." In the case of aneroid barometers, the only correction which need be applied is that for height, which can be obtained from the table on the opposite page.
6. In recording the Force of the Wind and State of the Weather, Sea and Swell, the following scheme is to be adopted:—

THE BEAUFORT WIND SCALE

Beaufort Number. International	Meteorological Wind Scale		The Seaman's Wind Scale	
	Limits of Velocities		Beaufort's description of Wind. International	Coastal Criterion
	Nautical miles per hour	Feet per second		
1	2	3	4	5
0	Less than 1	Less than 2	Calm	—
1	1—3	2—5	Light air	Sufficient to give good steerage way to fishing smacks with the "wind free."†
2	4—6	6—11	Light breeze	Fishing smacks with topsails and light canvas "full and by" make up to 2 knots.
3	7—10	12—18	Gentle Breeze	Smacks begin to heel over slightly under topsails and light canvas make up to 3 knots "full and by."
4	11—16	19—27	Moderate breeze	Good working breeze. Smacks heel over considerably on a wind under all sail.
5	17—21	28—36	Fresh breeze	Smacks shorten sail.
6	22—27	37—46	Strong breeze	Smacks double-reef gaff mainsails.
7	28—33	47—56	Moderate gale	Smacks remain in harbour and those at sea lie to.
8	34—40	57—68	Fresh gale	Smacks take shelter if possible.
9	41—47	69—80	Strong gale	—
10	48—55	81—93	Whole gale	—
11	56—65	94—110	Storm	—
12	Above 65	Above 110	Hurricane	—

For the purpose of showing the forces of winds by wind roses on Meteorological Charts, winds are grouped as follows:—

Scale Numbers		
0	.....	Calm
1 to 3	.....	Light winds
4 to 7	.....	Moderate winds
8 and above	.....	Gales

The scale numbers are attributed to the wind force at the time of observation by judgment of the observer. For the purposes of the Meteorologist, forces of 8 to 10 only are gales.

The Gale Warning Signal in the British Isles is hoisted for winds which may reach force 8 or above. For this purpose force 7 is not considered a gale.

In a steamer the force of the wind may be judged by an experienced observer by the appearance of the sea, remembering that rain has a smoothing effect, and tides or currents influence the sea surface differently when there is a weather or lee tide or current.

† Cutter or Yawl rigged average sized sailing trawler, loaded, with clean bottom.

### LETTERS TO INDICATE THE STATE OF THE WEATHER

<i>b</i> Blue sky (less than 1/8ths covered).	<i>m</i> Mist.
<i>bc</i> Sky partly cloudy (1/8ths to 1/2ths covered).	<i>o</i> Overcast sky (1/2ths covered nimbus or stratus only).
<i>c</i> Generally cloudy (more than 1/2ths covered).	<i>p</i> Passing showers.
<i>d</i> Drizzle, or fine rain.	<i>q</i> Squalls.
<i>e</i> Wet air without rain falling.	<i>r</i> Rain.
<i>f</i> Fog.	<i>rs</i> Sleet, i.e., rain and snow together.
<i>fe</i> Wet fog.	<i>s</i> Snow.
<i>g</i> Gloomy.	<i>t</i> Thunder.
<i>h</i> Hail.	<i>u</i> Ugly, threatening sky.
<i>i</i> Intermittent.	<i>v</i> Exceptional visibility (abnormal clearness of the atmosphere).
<i>KQ</i> Line Squall	<i>w</i> Dew.
<i>l</i> Lightning.	<i>x</i> Hoar frost.
	<i>y</i> Dry air.
	<i>z</i> Dust haze.

A capital letter denotes "intense" or "heavy"; e.g., R = heavy rain. Repetition of a letter denotes "continuous," e.g., RR = continuous heavy rain. Addition of suffix O to a letter denotes "slight," e.g., r<sub>o</sub>r<sub>o</sub> = continuous slight rain.

### COMBINED SEA AND SWELL SCALE

SEA	SWELL									
	No Swell	LOW			MODERATE			HEAVY		
		Short or Average	Long	Short	Average	Long	Short	Average	Long	Confused
	0	1	2	3	4	5	6	7	8	9
0 Calm	00	01	02	03	04	05	06	07	08	09
1 Smooth	10	11	12	13	14	15	16	17	18	19
2 Slight	20	21	22	23	24	25	26	27	28	29
3 Moderate	30	31	32	33	34	35	36	37	38	39
4 Rough	40	41	42	43	44	45	46	47	48	49
5 Very Rough	50	51	52	53	54	55	56	57	58	59
*6 High	60	61	62	63	64	65	66	67	68	69
*7 Very High	70	71	72	73	74	75	76	77	78	79
*8 Precipitous	80	81	82	83	84	85	86	87	88	89
†9 Confused	90	91	92	93	94	95	96	97	98	99

NOTE.—In this scale a new departure has been introduced in that length of swell and height of swell are, from the point of view of observations, considered separately and then combined together for coding.

A *Short Swell* means a Swell where the length or distance between each successive top of swell is less than 300 feet.

A *Long Swell* means a Swell where the length is more than 600 feet.

A *Low Swell* means a Swell where the height between the lowest and highest part of the swell is less than 6 feet.

A *Heavy Swell* means a Swell where the height is greater than 12 feet.

\* These are considered to represent seas which occur with a swell or in the open ocean, for instance, the highest sea recorded in sheltered waters would be 5, or under exceptional circumstances (e.g., a hurricane) 6 or 7 might be used. The idea of the roughness would be conveyed by the force of the wind.

† Occasioned by current, tide, sudden shift of wind, and not necessarily strong wind.

The above scales for sea and swell have been adopted separately for international use in weather reports.

7. The mean number of revolutions of the Engines per minute is to be registered every hour in the column appropriated for that purpose.

8. When in sight of Land, or of any known danger, cross bearings of, or angles between, well-defined objects, should be recorded at frequent intervals, and entered in the Log at least once in each Watch, for the information of the relieving Officers. The time of first sighting, and the bearing of, land or any marks, and of first obtaining soundings, with the results, are to be recorded.

9. In the space left for *Remarks*, must be recorded full information on all matters of importance or interest; as detailed in clause 3 of Article 1208 of the King's Regulations of which a copy is printed in the cover of this book.

At Sea, the *Remarks* column should contain all relevant information for working up the position of the ship at any moment, taking into consideration all the data logged on the left-hand page of each day.

L. 3380/92.  
Sta. 96/32.

### FOG AND VISIBILITY SCALE (SPECIFICATION FOR USE AT SEA)

0 Dense fog	.....	Objects not visible at 50 yards.
1 Thick fog	.....	" " 1 cable.
2 Fog	.....	" " 2 cables.
3 Moderate fog	.....	" " 1/2 mile.
4 Mist or haze, or very poor visibility	.....	" " 1 mile.
5 Poor visibility	.....	" " 2 miles.
6 Moderate visibility	.....	" " 5 miles.
7 Good visibility	.....	" " 10 miles.
8 Very good visibility	.....	" " 30 miles.
9 Excellent visibility	.....	Objects visible more than 30 miles.

To be inserted in "Weather and Visibility" column.

### Reduction of Barometric Pressure in Millibars of Aneroid Barometers to Mean Sea Level

Pressure at Station level 1000 millibars

Height in feet above sea level	Air temperature (° F.) (Dry bulb in Screen)				
	0° F.	20° F.	40° F.	60° F.	80° F.
	mb.	mb.	mb.	mb.	mb.
10	0.4	0.4	0.4	0.4	0.3
20	0.8	0.8	0.8	0.7	0.7
30	1.2	1.2	1.1	1.1	1.0
40	1.6	1.6	1.5	1.4	1.4
50	2.0	2.0	1.9	1.8	1.7
60	2.4	2.4	2.3	2.2	2.1
70	2.8	2.8	2.7	2.5	2.4
80	3.3	3.1	3.0	2.9	2.8
90	3.7	3.5	3.4	3.2	3.1

This correction is always +.







H.M.C.S.

*Stettler*

Monday

23<sup>rd</sup>

of

October

19 44

From

to

and at

GASPE

Time	Log (stating type)	Distance Run		Mean Revs. per Minute	True Course	Gyro Compass Course	Standard Compass Course	Deviation	Variation	Wind		Weather and Visibility	Sea and Swell	Corrected Barometric Pressure in Millibars	Temperature °F			
		Miles	Tenths							Direction (true)	Force (0-12)				Dry Bulb	Wet Bulb	Sea	
0100																		
0200																		
0300																		
0400										N	1	b5		10.08	36°			
0500																		
0600																		
0700																		
0800										N	1	b5		10.06	41			
0900																		
1000																		
1100																		
1200										N	0	b5		10.13	49			

Number on Sick List	Distance run through the Water	Zone Time kept at noon	Leave Granted to Ship's Company		Anchor Bearings	
14						

1300																		
1400																		
1500																		
1600										NW	0	b5		10.13	44			
1700																		
1800																		
1900																		
2000																		
2100																		
2200																		
2300																		
2400																		

REMARKS		Initials of the Officer of the Watch
0030	Rounds correct	
0315	Rounds correct	let B
0400	Watch relieved	Jm
0630	Ball Hands	
0700	Hands to Breakfast	
0755	Hands SW (SW)	
0800	Watch Relieved	Jm
0830	Amusement and magazines inspected	
0900	Colors	
1115	up spits	
1300	Hands to dinner watch relieved	Jm

Position	Latitude	Longitude	Depending on	Currents experienced
0800				
1200				
2000				

1305	First Lieutenants, Requesters & Defaulter 1315 hands fall in	
1600	Watch Relieved	C.B.
1700	Hands to supper	
1712	Summit	
1845	Slipped & proceeded	
2133	Rounds correct	let B







H.M.C.S. *Stettler*

Thursday 2nd of November

1944 From to and at *Halifax*

Time	Log (stating type)	Distance Run		Mean Revs. per Minute	True Course	Gyro Compass Course	Standard Compass Course	Deviation	Variation	Wind		Weather and Visibility	Sea and Swell	Corrected Barometric Pressure in Millibars	Temperature °F			
		Miles	Tenths							Direction (true)	Force (0-12)				Dry Bulb	Wet Bulb	Sea	
0100																		
0200																		
0300																		
0400										N.W.	1	B4		1035.44				
0500																		
0600																		
0700																		
0800										N.	0	F3		1034.42				
0900																		
1000																		
1100																		
1200										N.	0	B8		1036.63				

Number on Sick List	Distance run through the Water	Zone Time kept at noon	Leave Granted to Ship's Company	Anchor Bearings
			<i>Red watch leave from 1230 to 0100 Sunday.</i>	

1300																		
1400																		
1500																		
1600										N.	0	B8		1036.60				
1700																		
1800																		
1900																		
2000										N.	0	B8		1036.54				
2100																		
2200																		
2300																		
2400										N.	0	B6		1034.50				

REMARKS				Initials of the Officer of the Watch
0245 Lighter pulled away Ship's Decommission				
0303 Rounds correct				<i>ASD</i>
0400 Watch relieved 0400 Rounds correct				<i>ASD</i>
0700 A-lake hands 0715 Hand to Breakfast				
0755 hands fall in				
0800 Watch Relieved				
0900 Colours				
1200 Watch Relieved				<i>ASD</i>
1220 Station for shifting ship: W63. Alongside 1224.				

Position	Latitude	Longitude	Depending on	Currents experienced
0800				
1200				
2000				
1224 W63 along side				
1232 Leave zero drift				
1304 Enter Day Deck 1315 WATCHKEEPERS LIBERTY BOAT				
1500 Annual payment				
1530 Two ratings drafted aboard				
1600 Watch relieved 1601 SUNSET 1630 FIRST LIBERTY BOAT				
1730 HANDS TO SUPPER LIBERTY BOAT				
1830 LIBERTY BOAT				
2000 watch relieved LIBERTY BOAT				
2100 Duty watch to fire stations. Rounds correct				
2230 Pipe down				
2400 Watch relieved. Rounds correct				



H.M.C.S. *Stettler*

*Fri* day *3rd* of *November*

1944

From

to

, and at *Halifax*

Time	Log (stating type)	Distance Run		Mean Revs. per Minute	True Course	Gyro Compass Course	Standard Compass Course	Deviation	Variation	Wind		Weather and Visibility	Sea and Swell	Corrected Barometric Pressure in Millibars	Temperature °F			
		Miles	Tenths							Direction (true)	Force (0-12)				Dry Bulb	Wet Bulb	Sea	
0100																		
0200																		
0300																		
0400										N	0	B6		1035	44			
0500																		
0600																		
0700																		
0800										N	0	B6		1032	43			
0900																		
1000																		
1100																		
1200										N.W	0	B8		1035	42			

Number on Sick List	Distance run through the Water	Zone Time kept at noon	Leave Granted to Ship's Company		Anchor Bearings
			Normally leave granted to the watch		

1300																		
1400																		
1500																		
1600										N.W	0	B8		10.26	72			
1700																		
1800																		
1900																		
2000										N.W	0	B8		10.26	52			
2100																		
2200																		
2300																		
2400										N.W	0	B8		1030	48			

REMARKS

0400 WATCH RELIEVED

0500 Rounds correct

0600 Call hands

0700 Hands to breakfast 0755 Hands full down

0800 Watch Relieved

0900 balance

1000 Captain Requested 1 Defruster in quarter

1100 up spirits

1200 Hands so dinner Watch Relieved

Position	Latitude	Longitude	Depending on	Currents experienced
0800				
1200				
2000				

1300 Hands full down 1315 Watch begins Libertyman

1545 Sun

1630 First Liberty Boat 1600 Watch Relieved

1730 Hands to supper - Liberty Boat

1800 Sunset 1830 Liberty Boat

1900 Liberty Boat

2000 Liberty Boat 2000 Watch Relieved

2100 Rounds correct

2230 Pipe Down

2400 Watch Relieved Round correct

Initials of the Officer of the Watch

*J.W.*

*J.W.*

*J.W.*

*J.W.*



Time	Log (stating type)	Distance Run		Mean Revs. per Minute	True Course	Gyro Compass Course	Standard Compass Course	Deviation	Variation	Wind		Weather and Visibility	Sea and Swell	Corrected Barometric Pressure in Millibars	Temperature °F			
		Miles	Tenths							Direction (true)	Force (0-12)				Dry Bulb	Wet Bulb	Sea	
0100																		
0200																		
0300																		
0400										N	0	F3		1026	45			
0500																		
0600																		
0700																		
0800										N	0	F6		1022	42			
0900																		
1000																		
1100																		
1200										SE	0	bc4		1023	59			
Number on Sick List		Distance run through the Water		Zone Time kept at noon		Leave Granted to Ship's Company <i>LEAVE GRANTED TO THE WHITE WATCH</i>				Anchor Bearings								
1300																		
1400																		
1500																		
1600										SE	8	bc4		1026	55			
1700																		
1800																		
1900										SE	0	bc4		1012	50			
2000																		
2100																		
2200																		
2300																		
2400										NE	1	bc4		1026	49			

REMARKS					Initials of the Officer of the Watch
0130	Rounds correct				<i>RRB</i>
0200	Rounds correct				<i>RRB</i>
0300	Rounds correct				<i>RRB</i>
0400	Watch Relieved Rounds correct				<i>RRB</i>
0500	Rounds correct				<i>RRB</i>
0630	Call Hands				
0700	Hands to Breakfast				
0800	Hands to 0800 Watch Relieved 0800 Rounds correct				<i>RRB</i>
0815	Commenced firing practice but 0825 ship of boat 0830 removed from gun				
1047	Ship slipped				
1120	Ship tied up south end of Betty gun 1155 up anchor				<i>RRB</i>
1200	watch relieved				<i>RRB</i>
1315	FIRST LIBERTY BOAT				
1400	LIBERTY BOAT 1410 4 RATINGS DRAFTED ABOARD				
1520	1 RATING DRAFTED ABOARD				
1630	WATCH RELIEVED 1630 Liberty boat				<i>RRB</i>
1642	HL-315 alongside two rat. drafted on board				
1730	Hands to supper Liberty man 1800 sunset				
1800	Liberty man watch relieved				<i>RRB</i>
LIBERTY BOAT					
2100	Rounds correct				<i>RRB</i>
2230	PIPE DOWN				
2316	Rounds correct				<i>RRB</i>
2400	Watch Relieved 0020 A.B. Nichols executed on board by S.P.				<i>RRB</i>

Position	Latitude	Longitude	Depending on	Currents experienced
0800				
1200				
2000				







H.M.C.S. *Stettler*

Monday

6th of November

1944

From

to

and at Halifax

Time	Log (stating type)	Distance Run		Mean Revs. per Minute	True Course	Gyro Compass Course	Standard Compass Course	Deviation	Variation	Wind		Weather and Visibility	Sea and Swell	Corrected Barometric Pressure in Millibars	Temperature of			
		Miles	Tenths							Direction (true)	Force (0-12)				Dry Bulb	Wet Bulb	Sea	
0100										NE	2	dh		1009	54			
0200																		
0300																		
0400																		
0500																		
0600																		
0700																		
0800										N	3	dh		995	40			
0900																		
1000																		
1100																		
1200										NE	2	cb		996	42			

Number on Sick List	Distance run through the Water	Zone Time kept at noon	Leave Granted to Ship's Company	Anchor Bearings
			Normal leave granted	

1300																		
1400																		
1500																		
1600										NE	2	cb		996	42			
1700																		
1800																		
1900																		
2000										NE	1	cb		996	41			
2100																		
2200																		
2300																		
2400										NE	1	cb		998	40			

Time	REMARKS	Initials of the Officer of the Watch
0100		
0200	Jetty sentry relieved.	
0300		
0400	Jetty sentry relieved. Don & messenger relieved	Don
0510	Rounds covered	
0630	Call to hands	
0700		
0800	hands to Breakfast	
0800	Watch Relieved 0810 HANDS FALL IN 0855 COLOUR PARTY TO COASTER	COB
0900	COLOURS 0920 LIGHTER ALONGSIDE 0945 LIGHTER SLIPPED. 0950 AMMUNITION BARGE ALONGSIDE. 1000 CLEAR LOWER DECKS	
1130	UP SPIRITS 1155 SECURE	
1200	2 messengers relieved 1230 Out Pipes 1235 Clean Lower decks	Don

Position	Latitude	Longitude	Depending on	Currents experienced
0800				
1200				
2000				

1315	Watch keepers liberty men:	
1500	One E.A. drafted abv:	
1600	Watch relieved. 1620 Ammunition Boat alongside	Don
1730	Out Pipes 1745 Hands fall in 1758 sunset	
2000	WATCH RELIEVED 2000 Ammunition Boat Slipped	Don
2112	Rounds covered	
2230	sign down 2300 Out lights	
2400	Watch relieved.	



H.M.C.S. STETTLER

TUESday

1<sup>st</sup> of November

1944

From

to

and at Halifax

Time	Log (stating type)	Distance Run		Mean Revs. per Minute	True Course	Gyro Compass Course	Standard Compass Course	Deviation	Variation	Wind		Weather and Visibility	Sea and Swell	Corrected Barometric Pressure in Millibars	Temperature °F			REMARKS	Initials of the Officer of the Watch		
		Miles	Tenths							Direction (true)	Force (0-12)				Dry Bulb	Wet Bulb	Sea				
0100																					
0200																					
0300																					
0400										NE	2	CG	0	997	39						J.H.
0500																					
0600																					
0700																					
0800										NE	1	R5	0	996	40						J.H.
0900																					
1000																					
1100																					
1200										NE	2	R5		996	40						J.H.
Nur Sic		Number on Sick List	Distance run through the Water	Zone Time kept at noon	Leave Granted to Ship's Company				Anchor Bearings				Position	Latitude	Longitude	Depending on	Currents experienced				
					Normal leave granted to Red watch.								0800								
													1200								
													2000								
1300																					
1400																					
1500																					
1600										NE	2	R5		1000	42						J.H.
1700																					
1800																					
1900																					
2000										NE	3	CG		1001	40						CAB
2100																					
2200																					
2300																					
2400										NE	3	CG		1002	39						J.H.

0100 Challenged guard boat.

0400 Watch relieved

0630 Call hands 0700 hands to breakfast.

0745 Out Pipes.

0800 Hands fall in. watch relieved.

0900 Salms 0900 first lieutenant's Requester's & Reporter to quarters

1115 Up spirits.

1115 Up spirits.

1200 Watch relieved 1200 Hands to dinner.

1315 Watch Xpress. Libertyman hands fall in 1330 1st Liberty boat

1600 Salms 1600 Watch Relieved

1705 Salms 1700 Hands to supper 2nd Liberty boat 1755 Sunset

1830 3rd Liberty boat

2000 Watch Relieved 2000 Liberty Boat

2110 Rounds correct

2230 Pipe Down

2334 Challenged guard boat

2400 Rounds correct 2400 Watch Relieved



H.M.C.S. *Stettler*

*Wens* day 8<sup>th</sup> of *November*

1944

From

to

, and at *Halifax*

Time	Log (stating type)	Distance Run		Mean Revs. per Minute	True Course	Gyro Compass Course	Standard Compass Course	Deviation	Variation	Wind		Weather and Visibility	Sea and Swell	Corrected Barometric Pressure in Millibars	Temperature °F			
		Miles	Tenths							Direction (true)	Force (0-12)				Dry Bulb	Wet Bulb	Sea	
0100																		
0200																		
0300																		
0400										NE	3	C6		1002	38			
0500																		
0600																		
0700																		
0800										NE	3	C6		1002	36			
0900																		
1000																		
1100																		
1200										NE	3	C6		1004	42			

Number on Sick List	Distance run through the Water	Zone Time kept at noon	Leave Granted to Ship's Company		Anchor Bearings
			<i>Normal leave granted As</i>		

1300																		
1400																		
1500																		
1600										N	2	C5		999	41			
1700																		
1800																		
1900																		
2000										N	2	C5		999	39			
2100																		
2200																		
2300																		
2400										N	1	B6		999	39			

REMARKS		Initials of the Officer of the Watch
0400 Rounds correct watch Relieved		CGB
0500 Rounds correct		AG
0630 Fall Hands. - Rounds correct		AG
0700 Hands to Breakfast 0745 Out Pipes 0755 Hands Fall In		
0800 Watch Relieved		AG
0900 colors		
1030 HC 300 alongside 1040 HC 300 slipped		
1020 HC 158 alongside with Boiler Party 2025 HC 158 slipped		
1145 hands ashore to Barracks for dinner		
1200 Watch Relieved		CGB

Position	Latitude	Longitude	Depending on	Currents experienced
0800				
1200				
2000				

1315 Hands fall in. Watch keeps liberty boat.	
1435 Up spirits.	
1545 Secure	
1600 Watch relieved. 1630 LIBERTY MEN.	
1730 LIBERTY MEN.	
1830 Liberty men 1800 Sunset	
2000 Watch Relieved 2000 Liberty men	
2100 Rounds correct	AG
2230 Pipes Down.	
2400 Watch Relieved	AG



H.M.C.S.

*Stettin*

*Sunday*

*9<sup>th</sup> of November*

19*14*

From

to

and at *(Harbour) Halifax*

Time	Log (stating type)	Distance Run		Mean Revs. per Minute	True Course	Gyro Compass Course	Standard Compass Course	Deviation	Variation	Wind		Weather and Visibility	Sea and Swell	Corrected Barometric Pressure in Millibars	Temperature °F			
		Miles	Tenths							Direction (true)	Force (0-12)				Dry Bulb	Wet Bulb	Sea	
0100																		
0200																		
0300																		
0400										N	1	B6		1011	38			
0500																		
0600																		
0700																		
0800										N	1	B6		1012	34			
0900																		
1000																		
1100																		
1200										N	1	B7		1018	42			

Number on Sick List	Distance run through the Water	Zone Time kept at noon	Leave Granted to Ship's Company	Anchor Bearings
			<i>Normal leave granted Red watch</i>	

1300																		
1400																		
1500																		
1600										N	1	B7		1018	48			
1700																		
1800																		
1900																		
2000										N	1	B7		1021	34			
2100																		
2200																		
2300																		
2400										N	1	B7		1021	34			

REMARKS	Initials of the Officer of the Watch
0120 GUARD BOAT PASSED.	
0255 OFFICER OF WATCH SHAKEN.	
0309 ROUNDS CORRECT	<i>AWL</i>
0400 Q.M. MESSENGER RELIEVED. ROUNDS CORRECT.	<i>AWL</i>
0632 ROUNDS CORRECT. 0630 Ball Hands. 0645 Hands to Breakfast	<i>AWL</i>
0755 Hand Fall In	
0800 Q.M. & Messenger relieved ROUNDS CORRECT	<i>AWL</i>
0900 ANTI GAS PARTY TO SCHOOL: COLOURS.	
1030 Stand easy - Rigging down and Deck plates to be removed 1000 Deck Plates	
1115 Up spirits	
1149 Lower 1200 Q.M. & Boatmaster relieved	<i>AWL</i>

Position	Latitude	Longitude	Depending on	Currents experienced
0800				
1200				
2000				

1305 hands fall in Watchkeeper liberty boat	
1545 Secure Clear up decks	
1600 Watch Relieved 1630 1st Liberty Boat	<i>CB</i>
1730 2nd Liberty Boat Hands to Supper 1752 Clear up	
1830 3rd Liberty Boat	
2000 Liberty Boat 2000 Watch Relieved 2000 ROUNDS CORRECT	<i>AWL</i>
2100 ROUNDS CORRECT	<i>AWL</i>
2305 Guard Boat Passed	
2400 Watch Relieved ROUNDS CORRECT	<i>AWL</i>



Time	Log (stating type)	Distance Run		Mean Revs. per Minute	True Course	Gyro Compass Course	Standard Compass Course	Deviation	Variation	Wind		Weather and Visibility	Sea and Swell	Corrected Barometric Pressure in Millibars	Temperature °F			
		Miles	Tenths							Direction (true)	Force (0-12)				Dry Bulb	Wet Bulb	Sea	
0100																		
0200																		
0300																		
0400										N	1	B7		1022	32			
0500																		
0600																		
0700																		
0800										SW	1	C5		1020	42			
0900																		
1000																		
1100																		
1200										SW	1	C5		1020	46			

Number on Sick List	Distance run through the Water	Zone Time kept at noon	Leave Granted to Ship's Company	Anchor Bearings
			<i>Morgan leave for rest white water.</i>	

1300																		
1400																		
1500																		
1600										S.W.	1	C5		1019	47			
1700																		
1800																		
1900																		
2000										S.W.	1	C5		1017	49			
2100																		
2200																		
2300																		
2400										S	1	C5		1022	51			

REMARKS		Initials of the Officer of the Watch
0015	Round correct	
0200	Round correct	<i>R</i>
0400	Round correct 0400 Watch Relieved	<i>R.H.</i>
0630	Call hands	
0700	Hands to breakfast 0755 hand fall in	
0800	watch Relieved	<i>C.O.B.</i>
0900	Anti-Sea ready to school 0900 Colours	
1030	Requestment & Defaulter to Muster	
1115	Up Sprites	
1200	Hands to Dinner 1202 Watch Relieved	<i>R.H.</i>

Position	Latitude	Longitude	Depending on	Currents experienced
0800				
1200				
2000				

1315	Hands fall in (watchkeepers liberty boat)	
1520	Return gear to clear up decks 1550 Secure	
1600	Watch Relieved 1630 Liberty men 1640 Cap. Defaulter clear	
1645	Captain self to muster 1730 Liberty men hands to supper	
1752	Sunset 1830 Liberty men 1930 Liberty men	
1943	Two ratings drafted on board S.T.	
2000	Watch relieved	<i>R.H.</i>
2100	Round correct	<i>R.H.</i>
2230	Pipe Down	
2430	Round correct 2400 2 <sup>nd</sup> & 4 <sup>th</sup> messenger Relieved	<i>R.H.</i>



Time	Log (stating type)	Distance Run		Mean Revs. per Minute	True Course	Gyro Compass Course	Standard Compass Course	Deviation	Variation	Wind		Weather and Visibility	Sea and Swell	Corrected Barometric Pressure in Millibars	Temperature °F			
		Miles	Tenths							Direction (true)	Force (0-12)				Dry Bulb	Wet Bulb	Sea	
0100																		
0200																		
0300																		
0400										S.	1.	A.S.	0.	1014.	57.			
0500																		
0600																		
0700																		
0800										S.	1.	C.S.		1022.	57.			
0900																		
1000																		
1100																		
1200										S.	1.	C.S.		1009.	57.			

Number on Sick List	Distance run through the Water	Zone Time kept at noon	Leave Granted to Ship's Company	Anchor Bearings
			Leave Granted to Red & White Watch 0130 Sat. to 0800 Sun.	

1300																		
1400																		
1500																		
1600										S.	1.	D.5'		1005.	50.			
1700																		
1800																		
1900																		
2000										S.	1.	D.5'		1005.	54.			
2100																		
2200																		
2300																		
2400										S.	1.	D.5'		1003.	52.			

REMARKS		Initials of the Officer of the Watch
0130 Hand boat rounds.		
0200 1st lieutenant aboard. L.T. GANNON.		
0400 watch relieved.		J.M.
0620 Rounds correct. 0630 call hands		L.S.B.
0700 Hands to Breakfast 0800 Hands Fall in.		
0820 Y.C. NO. 1. alongside. 0900 colour. 1015 P.O. Johnston aboard.		
0915 Y.C. NO. 1. away. 1030 stand easy. 1040 out pipes		
1115 up spits. 1130 P.O. Johnston aboard. off leave		
1130 Afternoon watch to dinner. 1140 hands to dinner		
Watch relieved.		J.M.

Position	Latitude	Longitude	Depending on	Currents experienced
0800				
1200				
2000				

1330 1st Liberty Boat.				
1430 Liberty Boat				
1600 Watch Relieved. 1630 liberty boat				L.S.B.
1730 liberty boat hands to supper. 1750 Sunset				
1830 liberty boat				
2000 Watch Relieved. 2000 liberty Boat				C.A.B.
2125 Rounds correct				P.B.
2230 Pipe Down				
2330 Hand Boat Passed				
2305 Rounds correct				
2400 Rounds correct. 2400 Watch Relieved				L.S.B.



H.M.C.S.

*Stettin*

Sunday

1<sup>st</sup> of November

1944

From

to

, and at

*Halifax*

Time	Log (stating type)	Distance Run		Mean Revs. per Minute	True Course	Gyro Compass Course	Standard Compass Course	Deviation	Variation	Wind		Weather and Visibility	Sea and Swell	Corrected Barometric Pressure in Millibars	Temperature °F			
		Miles	Tenths							Direction (true)	Force (0-12)				Dry Bulb	Wet Bulb	Sea	
0100																		
0200																		
0300																		
0400										S	0	rs		1001	50			
0500																		
0600																		
0700																		
0800										N	0	FL		1000	44			
0900																		
1000																		
1100																		
1200										N	0	FG		1003	46			

Number on Sick List	Distance run through the Water	Zone Time kept at noon	Leave Granted to Ship's Company	Anchor Bearings
			<i>Normal leave for Red &amp; Blue watches</i>	

1300																		
1400																		
1500																		
1600										N	1	d		1003	44			
1700																		
1800																		
1900																		
2000										N	1	d		1002	40			
2100																		
2200																		
2300																		
2400										N	1	d		1002	38			

REMARKS					Initials of the Officer of the Watch
0400 Rounds correct. Watch Relieved					<i>CRB</i>
0515 Rounds correct					<i>CRB</i>
0700 Call Hands 0730 Hands to Breakfast					
0800 Watch Relieved 0800 Round correct					<i>CRB</i>
0830 Hands fall in. 0930 HC 76 slipped					
0900 Colors 0920 HC 76 came alongside with dory and washers					
1050 secure pipe down					
1115 up spuds 1130 liberty boat					
1200 hands to dinner. Watch Relieved					<i>CRB</i>

Position	Latitude	Longitude	Depending on	Currents experienced
0800				
1200				
2000				

1315 Liberty men				
1430 Liberty men				
1600 watch relieved				<i>CRB</i>
1630 Liberty men				
1730 Liberty men, hands to supper				
1749 Sunset				
1830 Liberty men				
1930 Liberty men				
2030 Black hit man down at page. 2000 Watch Relieved				<i>CRB</i>
2105 Rounds correct				<i>CRB</i>
2305 Guard boat rounds				
2400 watch relieved				<i>CRB</i>



H.M.C.S. *Stettin*

*Monday* 13 of *November*

19 *44*

From

to

, and at *Halifax*

Time	Log (stating type)	Distance Run		Mean Revs. per Minute	True Course	Gyro Compass Course	Standard Compass Course	Deviation	Variation	Wind		Weather and Visibility	Sea and Swell	Corrected Barometric Pressure in Millibars	Temperature of			
		Miles	Tenths							Direction (true)	Force (0-12)				Dry Bulb	Wet Bulb	Sea	
0100																		
0200																		
0300																		
0400										<i>N</i>	<i>0</i>	<i>C</i>		<i>1006</i>	<i>36</i>			
0500																		
0600																		
0700																		
0800										<i>N.W.</i>	<i>1</i>	<i>B.C.S</i>		<i>1007</i>	<i>38</i>			
0900																		
1000																		
1100																		
1200										<i>N.W.</i>	<i>1</i>	<i>C.S</i>		<i>1007</i>	<i>40</i>			

Number on Sick List	Distance run through the Water	Zone Time kept at noon	Leave Granted to Ship's Company	Anchor Bearings
			<i>Leave Granted Ood's white watches from 1630 to 1700</i>	

1300																		
1400																		
1500																		
1600										<i>N.W.</i>	<i>0</i>	<i>C.S</i>		<i>1007</i>	<i>40</i>			
1700																		
1800																		
1900																		
2000										<i>N.W.</i>	<i>0</i>	<i>C.S</i>		<i>1008</i>	<i>36</i>			
2100																		
2200																		
2300																		
2400										<i>N.W.</i>	<i>0</i>	<i>b7</i>		<i>1008</i>	<i>38</i>			

REMARKS	Initials of the Officer of the Watch
<i>0320 Rounds Correct.</i>	<i>P.B.</i>
<i>0400 Watch relieved Rounds correct</i>	<i>P.B.</i>
<i>0630 watch hands. 0640 Rounds Correct</i>	<i>P.B.</i>
<i>0700 hands to breakfast</i>	
<i>0800 Watch relieved. Hands fall in</i>	<i>J.M.</i>
<i>0859 Saloon party</i>	<i>P.B.</i>
<i>1030 1st Lieut. Request money for Liberty Stand. 1040 out-piped</i>	<i>P.B.</i>
<i>1115 Ammunition and magazines inspected</i>	<i>P.B.</i>
<i>1130 Up spirits. Afternoon watch relieved to dinner</i>	<i>P.B.</i>
<i>1145 Secure. 1200 Hands to dinner watch relieved</i>	<i>P.B.</i>

Position	Latitude	Longitude	Depending on	Currents experienced
0800				
1200				
2000				

<i>1315</i>				
<i>1350 Hands fall in watch relieved Liberty boat 1350 1st Lieut. out-piped</i>				
<i>1420 HC alongside with officer 1432 HC slipped</i>				
<i>1545 Secure clear up decks</i>				
<i>1600 Watch Relieved 1630 Liberty Boat</i>				<i>P.B.</i>
<i>1730 Hands to supper. Liberty Boat. 1742 Sunset</i>				
<i>1830 Liberty Boat</i>				
<i>2000 Liberty Boat 2000 Watch Relieved 2000 Rounds Correct</i>				<i>P.B.</i>
<i>2130 Rounds correct</i>				<i>P.B.</i>
<i>2230 Pipe down</i>				
<i>2340 Rounds correct. 2400 Watch Relieved</i>				<i>P.B.</i>



Time	Log (stating type)	Distance Run		Mean Revs. per Minute	True Course	Gyro Compass Course	Standard Compass Course	Deviation	Variation	Wind		Weather and Visibility	Sea and Swell	Corrected Barometric Pressure in Millibars	Temperature of			
		Miles	Tenths							Direction (true)	Force (0-12)				Dry Bulb	Wet Bulb	Sea	
0100																		
0200																		
0300																		
0400										NW	0	67		1008	36			
0500																		
0600																		
0700																		
0800										NW	0	65		1008	36			
0900																		
1000																		
1100																		
1200										NW	0	65		1008	40			

Number on Sick List	Distance run through the Water	Zone Time kept at noon	Leave Granted to Ship's Company	Anchor Bearings
			Normal leave White & Blue watches	

1300																		
1400																		
1500																		
1600										NW	0	56		1008	42			
1700																		
1800																		
1900																		
2000										NW	0	66		1007	40			
2100																		
2200																		
2300																		
2400										NW	0	65		1007	36			

REMARKS	Initials of the Officer of the Watch
0140 Guard Boat Passed.	
0400 Watch Relieved 0400 Rounds Correct.	H.H.
0510 Rounds correct.	J.G.W.
0630 Call hands	
0700 hands to Breakfast 0745 Out Pipes 0755 Hands Fall In	COB
0800 Watch Relieved.	J.G.W.
0910-12 Powder from crew to classes. 0930 Cooks of Messes Fall In	
10.30 H.M. from crew to gunnery school stand easy 10.40 Out pipes	
11.15 up spirits 11.30 afternoon watchmen to dinner.	
1200 Watch Relieved 1200 Hands to Dinner	H.H.

Position	Latitude	Longitude	Depending on	Currents experienced
0800				
1200				
2000				

1315 Hands Fall In 1315 Watch Keepers Liberty Boat	J.G.W.
1400 H.M. marks tied along sides 1405 Marks Slipped	J.G.W.
1545 Secure aboard up Decks	J.G.W.
1600 2 G.M. & Messengers Relieved Rounds Correct	J.G.W.
1600 H.C. along side No 146 1622 H.C. away No 146	
1600 Liberty men & black list men mustered.	
1730 Hands to supper Liberty men & black list men.	
1747 Sunset 1830 Liberty men 2000 Liberty men.	
2000 Watch Relieved.	J.G.W.
2030 Rounds correct	
2230 Pipes Down 2245 Guard Boat Passed	J.G.W.
2350 Rounds correct	
2400 2 G.M. & Messengers Relieved Rounds Correct	J.G.W.







Time	Log (stating type)	Distance Run		Mean Revs. per Minute	True Course	Gyro Compass Course	Standard Compass Course	Deviation	Variation	Wind		Weather and Visibility	Sea and Swell	Corrected Barometric Pressure in Millibars	Temperature of			
		Miles	Tenths							Direction (true)	Force (0-12)				Dry Bulb	Wet Bulb	Sea	
0100																		
0200																		
0300																		
0400										N	1	b.c.g		1010	37			
0500																		
0600																		
0700																		
0800										N	1	b.c.g		1010	38			
0900																		
1000																		
1100																		
1200										N	1	c.g		1008	42			

Number on Sick List	Distance run through the Water	Zone Time kept at noon	Leave Granted to Ship's Company <i>Normal for Red &amp; White watches 1630 to 1700</i>	Anchor Bearings
---------------------	--------------------------------	------------------------	---	-----------------

1300																		
1400																		
1500																		
1600										N	1	c.g		1008	46			
1700																		
1800																		
1900																		
2000										NE	0	c.g		1009	44			
2100																		
2200																		
2300																		
2400										NE	1	e.g		1010	42			

REMARKS		Initials of the Officer of the Watch
0230	Gaund boat passed	
0315	Rounds CORRECT	<i>GBB</i>
0400	Watch Relieved Rounds correct	<i>COB</i>
0630	Call Hands - 0640 Rounds CORRECT	<i>GBB</i>
0700	Hands to Breakfast 0745 Hands Fall Down	
0800	Rounds CORRECT 0900 Watch Relieved	<i>GBB</i>
0900	Colours 0915 Ammunition and magazines inspected	
1020	Jump alongside to shift ship, 1030 slipped from both sides	
1145	Secured clear up deck	
1105	Secured alongside H.M.C.S. St Stephen 1130 up spirits	
1200	Hands to Dinner watch Relieved 1230 Cap. Pagn. Ref. to Clean	<i>COB</i>

Position	Latitude	Longitude	Depending on	Currents experienced
0800				
1200				
2000				

1150	Cap. Pagn. Ref. minutes 1215 hands up 1115 Liberty men	
1230	H.C. 183. Alongside 1245 H.C. 183 away 1250 611 Alongside	
1345	Secured clear up deck	
1635	1 rating dropped on board	
1600	watch relieved 1630 Liberty Boat	
1730	Liberty men Hands to supper 1746 sunset	
1725	1 rating dropped on board	
1830	Liberty Boat	
1900	Liberty Boat	
2000	QM + Messengers relieved	
2000	QM + Messengers relieved 2000 Liberty Boat	
2100	Rounds correct	
2225	Gaund Boat rounds 2250 Pipe Down	
2300	Rounds correct	
2400	watch relieved	



H.M.C.S. *Stettler* *Tri* day *17<sup>th</sup>* of *November*

1944 From to and at *Halifax NS*

Time	Log (stating type)	Distance Run		Mean Revs. per Minute	True Course	Gyro Compass Course	Standard Compass Course	Deviation	Variation	Wind		Weather and Visibility	Sea and Swell	Corrected Barometric Pressure in Millibars	Temperature °F			
		Miles	Tenths							Direction (true)	Force (0-12)				Dry Bulb	Wet Bulb	Sea	
0100																		
0200																		
0300																		
0400										NE	0	cb		1009	43			
0500																		
0600																		
0700																		
0800										N-E	2	Bc6		1011	40			
0900																		
1000																		
1100																		
1200										N-E	2	Bc6		1013	42			

Number on Sick List	Distance run through the Water	Zone Time kept at noon	Leave Granted to Ship's Company	Anchor Bearings
			leave granted white & blue watches 0430 & 0700	

1300																		
1400																		
1500																		
1600										NE	2	cb		1013	46			
1700																		
1800																		
1900																		
2000										NE	2	cb		1015	44			
2100																		
2200																		
2300																		
2400										NE	1	Bc6		1016	38			

REMARKS	Initials of the Officer of the Watch
0345 Rounds correct.	RAH
0400 - QM and Messengers relieved. 0400 Rounds correct.	RAH
0545 Spring Hill's slipped petty 1.	
0630 shake hands.	
0700 hands to line start. 0705 AB Dinner on board of leave.	
0800 watch relieved.	
0900 Colours: W. W/T. Rod; C.D. & C.V.D. & all Officers & action from II Ex.	
1030 Stand Easy 12.40 Out Pipes. 11.45 same crew up decks.	
11.15 Up spirits 11.35 Ship's Company left from action room.	
1200 Hands to Dinner. Watch Relieved.	RAH

Position	Latitude	Longitude	Depending on	Currents experienced
0800				
1200				
2000				

1315 Hands fall on watch from liberty boat.	
1330 Ammunition and magazines inspected.	
1450 1 rating of 1st drafted onboard.	
1545 Secure clear up decks. 16.30 Liberty Boat.	
1600 Watch Relieved. 1600 Loading. Star drafted onboard.	CRB
1730 Hands to supper. Liberty Boat 1744 sunset.	
1830 Liberty Boat. 1855 Lights along side ammunition to the	
1915 Ammunition lighter pulled away. 1920 1st rating drafted aboard.	
2000 Watch Relieved. 2000 Rounds. Liberty Boat.	RAH
2122 Rounds correct.	CRB
2230 Pipe Dinner.	
2400 watch Relieved. Rounds correct.	CRB



H.M.C.S.

*Stittler*

*Sat* day *18* of *November*

19 *44*

From

to

, and at *Halifax*

Time	Log (stating type)	Distance Run		Mean Revs. per Minute	True Course	Gyro Compass Course	Standard Compass Course	Deviation	Variation	Wind		Weather and Visibility	Sea and Swell	Corrected Barometric Pressure in Millibars	Temperature °F		
		Miles	Tenths							Direction (true)	Force (0-12)				Dry Bulb	Wet Bulb	Sea
0100																	
0200																	
0300																	
0400										NE	1	b.c.b.		1015	39		
0500																	
0600																	
0700																	
0800										NE	1	C6		1015	37		
0900																	
1000																	
1100																	
1200										NE	1	C6		1017	40		

Number on Sick List	Distance run through the Water	Zone Time kept at noon	Leave Granted to Ship's Company	Anchor Bearings
			<i>Leave for Red &amp; Blue watches from 1850 to 2400</i>	

1300																	
1400																	
1500																	
1600										NE	1	B.c.b.		1017	50		
1700																	
1800																	
1900																	
2000										NE	0	B.c.b.		1018	38		
2100																	
2200																	
2300																	
2400										NE				1017	39		

REMARKS	Initials of the Officer of the Watch
<i>0250 Ground Boat Passed.</i>	
<i>0400 Watch Relieved 0200 Rounds. Correct</i>	<i>STH</i>
<i>0525 Rounds Correct</i>	<i>STH</i>
<i>0630 Call hands</i>	
<i>0700 Hands to Breakfast 0755 hands fall in</i>	
<i>0800 Watch Relieved</i>	<i>COB</i>
<i>0845 Ammunition and magazines inspected</i>	
<i>0900 Colours 0900 lights alongside</i>	
<i>1115 Up Spirit 1155 Leave</i>	
<i>1200 Hands to Dinner Watch Relieved 1230 Hand along in 400</i>	<i>1245 special sea duty men</i>

Position	Latitude	Longitude	Depending on	Currents experienced
0800				
1200				
2000				

1300 Harbo 50 stations 1358 slipped from St Stephen at 8 Jetty	
1426 tied up to 401 Buoy 1430 tug sardusky along side 1450 Harbo 50	
1500	
1600 <i>2.45 1 messenger Relieved 1605 sandusky passed F. Duggan alongside</i>	<i>STH</i>
<i>1700 sea duty 1735 F. Duggan away 1740 special sea duty men</i>	
<i>1808 tug along side Harbour 401</i>	
<i>1850 Liberty men</i>	
<i>1930 Liberty men</i>	
<i>2000 watch relieved - 2000 Liberty Boat</i>	<i>STH</i>
<i>2100 Rounds correct</i>	<i>STH</i>
<i>2205 H.C. 82 alongside 2230 - Pipe down 2245 H.C. 82 slipped</i>	
<i>2400 - Watch RH &amp; Messenger relieved</i>	<i>STH</i>



H.M.C.S. *Stetler*

*Sunday* 19 of *November*

19 *44* From

to

*Halifax and*  
and at *St. Margarets Bay*

Time	Log (stating type)	Distance Run		Mean Revs. per Minute	True Course	Gyro Compass Course	Standard Compass Course	Deviation	Variation	Wind		Weather and Visibility	Sea and Swell	Corrected Barometric Pressure in Millibars	Temperature °F			
		Miles	Tenths							Direction (true)	Force (0-12)				Dry Bulb	Wet Bulb	Sea	
0100																		
0200																		
0300																		
0400										<i>NE</i>	<i>H</i>	<i>BCL</i>		<i>10.12</i>	<i>38</i>			
0500																		
0600																		
0700																		
0800																		
0900																		
1000																		
1100																		
1200										<i>N</i>		<i>B6</i>		<i>10.18</i>	<i>42</i>			

Number on Sick List	Distance run through the Water	Zone Time kept at noon	Leave Granted to Ship's Company		Anchor Bearings	
			<i>No Leave</i>			

1300																		
1400																		
1500																		
1600										<i>N</i>		<i>B6</i>		<i>10.16</i>	<i>58</i>			
1700																		
1800																		
1900																		
2000																		
2100																		
2200																		
2300																		
2400																		

REMARKS	Initials of the Officer of the Watch
<i>0330 shake hands 0345 special duty on deck</i>	
<i>0400 Hands to station for leaving harbor 0410 ship's</i>	<i>J.H.</i>
<i>0943 Ammunition and magazines inspected @ 0950 revert harbor watches</i>	
<i>10.30 Stand Easy 10.40 out. Repair</i>	
<i>1140 Clear lower decks last watch 1150 secure</i>	
<i>1200 watch relieved</i>	<i>J.H.</i>

Position	Latitude	Longitude	Depending on	Currents experienced	O.F. REMAIN:	
0800					<i>40</i>	<i>57.2 TONS</i>
1200					<i>Exp.</i>	<i>88.5 %</i>
2000					<i>F.W. REMAIN:</i>	<i>20.5 TONS</i>
					<i>Exp.</i>	<i>25.2 TONS</i>
						<i>10.2 TONS</i>

1300						
1400						
1500						
1600						
1700						
1800						
1900						
2000						
2100						
2200						
2300						
2400						







H.M.C.S. *Stetler*

*Sunday 26 of November*

Time	Log (stating type)	Distance Run		Mean Revs. per Minute	True Course	Gyro Compass Course	Standard Compass Course	Deviation	Variation	Wind		Weather and Visibility	Sea and Swell	Corrected Barometric Pressure in Millibars	Temperature °F			
		Miles	Tenths							Direction (true)	Force (0-12)				Dry Bulb	Wet Bulb	Sea	
0100																		
0200																		
0300																		
0400										NNW	2	bc7		10.07	36			
0500																		
0600																		
0700																		
0800										NNW	2	bc7		10.11	36			
0900																		
1000																		
1100																		
1200										N	2	c6		10.15	60			

Number on Sick List	Distance run through the Water	Zone Time kept at noon	Leave Granted to Ship's Company	Anchor Bearings
			<i>Blue watch from 1300 Nov 26<sup>th</sup> to 0900 Nov 28<sup>th</sup></i>	

1300																		
1400																		
1500																		
1600										NW	2	66		10.05	63			
1700																		
1800																		
1900																		
2000										NW	1	c-6		10.20	32			
2100																		
2200																		
2300																		
2400										NW	2	B7		10.30	32			

1944

From

to

and at *Halifax*

REMARKS	Initials of the Officer of the Watch
0130 Rounds correct	<i>AGD</i>
0400 Watch Relieved Rounds correct	<i>COB</i>
0600 Rounds correct	<i>AGD</i>
0700 Short Hands. 0730 Hands to Breakfast.	
0800 Rounds correct 0800 Watch Relieved 0830 Hands fall in	<i>BTH</i>
0900 Colours 0940 H.M.C.S. <i>Stonsea</i> slipped	
1115 Up Spirits 1130 Lighter alongside with supplies 1147 Lighter slipped	<i>COB</i>
1200 Watch Relieved Hand to dinner 1230 H.C. 145 alongside	

Position	Latitude	Longitude	Depending on	Currents experienced
0800				
1200				
2000				

1315 Liberty Boat 1320 H.C. 183 slipped	
1430 Liberty Boat	
1544 Messenger Relieved 1630 Liberty man	<i>AGD</i>
1730 hands to supper Liberty man 1737 Sensed	
1830 Liberty man 1855 T. 376 alongside	
1930 Liberty man	
2000 Watch relieved	<i>AGD</i>
2100 Rounds correct	<i>AGD</i>
2400 Messenger Relieved Rounds correct	<i>AGD</i>



H.M.C.S. *Stettin*

Monday 27 of November

19 44 From to , and at Halifax

Time	Log (stating type)	Distance Run		Mean Revs. per Minute	True Course	Gyro Compass Course	Standard Compass Course	Deviation	Variation	Wind		Weather and Visibility	Sea and Swell	Corrected Barometric Pressure in Millibars	Temperature °F			
		Miles	Tenths							Direction (true)	Force (0-12)				Dry Bulb	Wet Bulb	Sea	
0100																		
0200																		
0300																		
0400										N.W.	B.7.			1023	30			
0500																		
0600																		
0700																		
0800										N.W.	B.2.			1020	28			
0900																		
1000																		
1100																		
1200										S.W.	B.6.			1025	44			

Number on Sick List	Distance run through the Water	Zone Time kept at noon	Leave Granted to Ship's Company	Anchor Bearings
			Leave Granted Blue & Red watches from 1330 until 0100.	

1300																		
1400																		
1500																		
1600										S.W.	C.5			1022	40			
1700																		
1800																		
1900																		
2000										S.W.	C.5			1020	40			
2100																		
2200																		
2300																		
2400										S.W.	C.5			1018	46			

REMARKS	Initials of the Officer of the Watch
0245 - Rounds correct	J.M.
0345 - Watch released	J.M.
0630 - Rounds correct 0630 Call Hands	J.M.
0700 Hands to Breakfast 0735 Hands Fall in	J.M.
0800 2 <sup>nd</sup> & 4 <sup>th</sup> Quarters Released Rounds correct	J.M.
0900 Cabin Cooks for mess as fall in	
1030 stand easy 1045 out pipe	
1115 - 4 spirits 1130 afternoon watch to bed in	
1150 secure chain cables 1300 watch released hands to	J.M.

Position	Latitude	Longitude	Depending on	Currents experienced
0800				
1200				
2000				

1310 Hands Fall in 1330 Liberty boat	
1430 Stand easy Liberty Boat 1430 H.M.S. Golden Fleese stepped	
1600 watch Released 1630 Liberty boat	J.M.
1700 Duty Watch & Blacklistened to Master 1730 Hands to supper	
1820 Liberty Boat	
2000 Liberty Boat 2000 Watch Released	J.M.
2100 Rounds correct	J.M.
2210 Guard boat Passed 2230 Pipe down	
2400 Rounds correct watch Released	J.M.



H.M.C.S. *Stettler*

Tues day 28th of November

1944

From

to

and at *Halifax*

Time	Log (stating type)	Distance Run		Mean Revs. per Minute	True Course	Gyro Compass Course	Standard Compass Course	Deviation	Variation	Wind		Weather and Visibility	Sea and Swell	Corrected Barometric Pressure in Millibars	Temperature °F			
		Miles	Tenths							Direction (true)	Force (0-12)				Dry Bulb	Wet Bulb	Sea	
0100																		
0200																		
0300																		
0400										SW	LS'			10.14	48			
0500																		
0600																		
0700																		
0800										SW	LS'			10.12	46			
0900																		
1000																		
1100																		
1200										SW	LS'			10.11	50			

Number on Sick List	Distance run through the Water	Zone Time kept at noon	Leave Granted to Ship's Company	Anchor Bearings
			<i>Leaves for rest and white watches from 1630 to 0700. C. P. 0220. 0230. with water kegs 1030.</i>	

1300																		
1400																		
1500																		
1600										N.	BS'			10.10	50			
1700																		
1800																		
1900																		
2000										NW	BS'			10.09	41			
2100																		
2200																		
2300																		
2400										N.	BS'			10.08	36			

REMARKS	Initials of the Officer of the Watch
0130 Rounds Correct.	<i>BS</i>
0400 Rounds Correct 0400 Watch Relieved	<i>BS</i>
0530 Rounds Correct	<i>BS</i>
0630 Call Hands	
0700 Hands to Breakfast 0755 hands fall in	
0800 Watch Relieved 0800 H.C. alongside 0815 H.C. slipped <sup>apart</sup>	<i>BS</i>
0900 Colours	
0915 Light alongside 0936 Lighter slipped 0930 H.C. slipped <sup>apart</sup>	
1030 Stand Easy 1045 Put Pipes	
1115 Up Spirit 1130 Afternoon Watch to Dinner 1050 Hands Clean Up Deck	
1200 Hands to Dinner 1200 Watch Relieved 1230 Blacklist on stowage	<i>BS</i>

Position	Latitude	Longitude	Depending on	Currents experienced
0800				
1200				
2000				
1305				
1310 H.C. 84 alongside 1310 Hands fall in 1315 H.C. 137 alongside				
1330 H.C. 84 away 1430 water kegs put in				
H.C. 2032 alongside 1500 H.C. 152 H.C. 203 away 1520 1545				
1630 Liberty Boat 1637 C132 alongside 1640 slipped				
1630 1736 Colours Liberty men				
1830 Liberty Boat				
1945 Liberty Boat 1955 KB70 4th C. alongside				
2000 Q.M. messenger relieved				
2030 Rounds correct				
2200 Blacklist on stowage 2230 Put Pipes				
2300				
2400				



Time	Log (stating type)	Distance Run		Mean Revs. per Minute	True Course	Gyro Compass Course	Standard Compass Course	Deviation	Variation	Wind		Weather and Visibility	Sea and Swell	Corrected Barometric Pressure in Millibars	Temperature °F			
		Miles	Tenths							Direction (true)	Force (0-12)				Dry Bulb	Wet Bulb	Sea	
0100																		
0200																		
0300																		
0400										N	B.5			1017	33			
0500																		
0600																		
0700																		
0800										N	C.5			1025	32			
0900																		
1000																		
1100																		
1200										NNE	C.3			1025	37			

Number on Sick List	Distance run through the Water	Zone Time kept at noon	Leave Granted to Ship's Company		Anchor Bearings
			White & Blue watches from 1630-0700 O. & P. O. 730.	Watchkeepers from 1330-1030	

1300																		
1400																		
1500																		
1600										NE	1 C.6			1024	40			
1700																		
1800																		
1900																		
2000										NE	0 C.6			1030	38			
2100														1029				
2200																		
2300																		
2400										NE	1 C.5			1029	38			

REMARKS	Initials of the Officer of the Watch
0145 Round correct	J
0400 QM & Messenger relieved - Round correct	
0540 Round correct 0630. shake hands	J
0700 hands to breakfast. 0750. cut pipes.	
0755 hands fall in. 0800. water relieved	J
0900 Colours. Cooks of mess fall in.	
1030 Free Lint's request in a default. stand only 1045 cut pipes	
1115 Up spirits 1130 afternoon watch to dinner. 1150 SECURE	
1200 Hands to dinner. W. J. J. relieved	J. J. J.

Position	Latitude	Longitude	Depending on	Currents experienced
0800				
1200				
2000				

1300	12 pounder gun crew to battery for drill 1310 hands fall in	RB
1400	watch keepers liberty boat. provisions brought aboard	
1545	secure clean up decks	
1600	watch relieved 1630 liberty boat	RB
1730	liberty boat hands to supper 1735 sunset	RB
1830	liberty boat	
2000	liberty boat watch Relieved	RB
2105	Round correct	J. J. J.
2400	Round correct	J. J. J.



H.M.C.S. *Stettin* *Three* day *30* of *November*

Time	Log (stating type)	Distance Run		Mean Revs. per Minute	True Course	Gyro Compass Course	Standard Compass Course	Deviation	Variation	Wind		Weather and Visibility	Sea and Swell	Corrected Barometric Pressure in Millibars	Temperature °F		
		Miles	Tenths							Direction (true)	Force (0-12)				Dry Bulb	Wet Bulb	Sea
0100																	
0200																	
0300										NE	0 S						
0400										NE	0 S 6	0	1027	34	34		
0500																	
0600																	
0700																	
0800										SE	1 0 6		1024	40			
0900																	
1000																	
1100																	
1200										SE	2 0 5		1024	40			

Number on Sick List	Distance run through the Water	Zone Time kept at noon	Leave Granted to Ship's Company		Anchor Bearings
			RED WATCH FROM 1630 TO 0400 CAPT 0730 WATCH KEEPERS 1330 TO 1030		

1300																	
1400																	
1500																	
1600										S.E.	6 6 6		1014	41			
1700																	
1800										SSE	7		1001	53			
1900																	
2000										SSE	6 0 6		1001	53			
2100											5						
2200																	
2300																	
2400										SSW	3 0 6		1000	50			

19 40 From \_\_\_\_\_ to \_\_\_\_\_ and at *Halifax*

REMARKS	Initials of the Officer of the Watch
0330 Rounds correct.	
0400 Rounds correct watch Relieved	
0630 all hands 0700 hands to breakfast	RB
0755 Hands Fall In 0800 watch Relieved	RB
0800 Watch Relieved 0840 Night Vision Class. 1030 night vision class over	
0900 Colours	
1115 24 Spits 1150 Secure clean up deck	
1200 Hands to dinner watch Relieved 1230 Black timber miter	CB

Position	Latitude	Longitude	Depending on	Currents experienced
0800				
1200				
2000				

1305 Out Pipe.	
1545 SECURE CLEAR UP DECKS 1600 WATCH RELIEVED	RB
1600 WATCH RELIEVED 1630 Heavy Boat	
1700 Black timber 1730 HANDS TO SUTTER LIBERTY MEN 1731 SENSE	
1930 clean up for rounds	
Watch relieved	
2100 Rounds correct	RB
2230 Pipe Down	
2400 One messenger Relieved Rounds correct	RB



Time	Log (stating type)	Distance Run		Mean Revs. per Minute	True Course	Gyro Compass Course	Standard Compass Course	Deviation	Variation	Wind		Weather and Visibility	Sea and Swell	Corrected Barometric Pressure in Millibars	Temperature °F			
		Miles	Tenths							Direction (true)	Force (0-12)				Dry Bulb	Wet Bulb	Sea	
0100																		
0200																		
0300																		
0400										SW	0	C7	E	10.11	46			
0500																		
0600																		
0700																		
0800										SW	3	BC		10.00	45			
0900																		
1000																		
1100																		
1200										SW	3	du		10.06	43			

Number on Sick List	Distance run through the Water	Zone Time kept at noon	Leave Granted to Ship's Company	Anchor Bearings
			LEAVE GRANTED TO RED AND WHITE WATCHES FROM 16.30 TO 0700. CHAPMAN'S 0730. WATCHKEEPERS 10.30	

1300																		
1400																		
1500																		
1600										W	3	BC		10.05	42			
1700																		
1800																		
1900																		
2000										W	2	C6	tt	10.08	42			
2100																		
2200																		
2300																		
2400										W	2	C6		10.00	38			

REMARKS	Initials of the Officer of the Watch
02.30 Rounds correct	ABD
04.05 Watch received Round correct	ABD
05.20 Rounds correct	ABD
06.30 Call hands	
07.00 Hands to Breakfast 07.50 Out pipes 07.55 Hands fall in.	
08.00 - QM + Messengers relieved. Rounds correct. <sup>torpedo</sup> hands fall in - cases	ABD
09.00 Colors	ABD
10.30 Stand easy 10.55 out pipes	ABD
12.00 Watch received 12.00 Hands to dinner	ABD

Position	Latitude	Longitude	Depending on	Currents experienced
0800				
1200				
2000				

13.10 Hands fall in up. Spirits 17.30 Watchkeeper Liberty boat	
15.45 Secure Chas up. Decks <sup>16.30 Liberty Boat</sup>	
16.00 watch Relieved 16.30 Liberty Boat 16.45 H.C. 183 alongside	ABD
17.05 H.C. 183 slipped. <sup>17.15 Chinese fire Station</sup> 17.30 Liberty Boat 17.34 sunset. 17.30 Hands to supper	ABD
18.30 Liberty Boat.	ABD
20.00 watch Relieved Liberty Boat	ABD
21.15 Rounds correct	ABD
22.30 Pipe Down	
24.00 QM + Messengers relieved. Rounds correct	ABD



Time	Log (stating type)	Distance Run		Mean Revs. per Minute	True Course	Gyro Compass Course	Standard Compass Course	Deviation	Variation	Wind		Weather and Visibility	Sea and Swell	Corrected Barometric Pressure in Millibars	Temperature °F			
		Miles	Tenths							Direction (true)	Force (0-12)				Dry Bulb	Wet Bulb	Sea	
0100																		
0200																		
0300																		
0400										SW	1	bc 6		1013	38			
0500											1			1013	38			
0600																		
0700																		
0800										N.W	1	7		1016	34			
0900																		
1000																		
1100																		
1200										NW	1	b 7		1020	46			

Number on Sick List	Distance run through the Water	Zone Time kept at noon	Leave Granted to Ship's Company	Anchor Bearings
			LEAVE GRANTED TO WHITE & BLUE WATCHES FROM 1600 TO 0900 CAPD'S 1600 TO 0900	

1300																		
1400																		
1500																		
1600										SW	1	b 7		1021	39			
1700																		
1800																		
1900																		
2000										N.N.W	2			1016	33			
2100																		
2200																		
2300																		
2400										N.N.E	8			1026	30			

REMARKS		Initials of the Officer of the Watch
0015 Rounds correct		
0230 7th crew returned from long leave		
0400 watch relieved 0400		RB
0500 watch relieved 0400 0500 Rounds correct		RB
0630 Call the Hands		
0700 Hands to Breakfast		
0800 2000 ft fall in 0805 H.C. 237 alongside 0815 H.C. 237 slipped		
0900 Colours		
1000 First Lt. Requestment 1030 Capt. Requestment 1015 Capt. Requestment to clean into Rig of Day		
1130 Clean lower decks		
1200 Watch relieved		

Position	Latitude	Longitude	Depending on	Currents experienced
0800				
1200				
2000				

1300	Black listmen's muster	
1530	slipped gun work 1550 alongside of petty	
1515	lug along side, lands to stations for drifting ship	
1600	Watch relieved 1600 Liberty men 1630 Liberty boat	JRD
1700	Duty watch 9 Black list men to muster 1730 Hands to supper Liberty men	JRD
1830	Liberty men & Black list men to muster	
2000	0709 messenger relieved Liberty boat 2010 Clean lower decks	JRD
2035	Rounds correct	JRD
2200	Rounds correct	JRD
	Watch relieved	JRD



Time	Log (stating type)	Distance Run		Mean Revs. per Minute	True Course	Gyro Compass Course	Standard Compass Course	Deviation	Variation	Wind		Weather and Visibility	Sea and Swell	Corrected Barometric Pressure in Millibars	Temperature of			
		Miles	Tenths							Direction (true)	Force (0-12)				Dry Bulb	Wet Bulb	Sea	
0100																		
0200																		
0300																		
0400										NW	2	B2		1016	28			
0500																		
0600																		
0700																		
0800										UW	1	b.7		1025	28			
0900																		
1000																		
1100																		
1200										NNW	3	0.7		1016	30			

Number on Sick List	Distance run through the Water	Zone Time kept at noon	Leave Granted to Ship's Company	Anchor Bearings
			LEAVE GRANTED TO RED WATCH FROM 1230 DEC 3/44 TILL 0700 DEC 5/44. BLUE WATCH 12.30 DEC 3/44 TO 0700 DEC 4/44. 0400-2 0730 WATCH KEPT PERKS 10.30	

1300																		
1400																		
1500																		
1600										N	4	S.6		1027	35			
1700																		
1800																		
1900																		
2000										N	4	S.7		1026	34			
2100																		
2200																		
2300																		
2400										N	4	S.6		1016	37			

REMARKS					Initials of the Officer of the Watch	
0125	Rounds Correct.	0128	SAURD BOAT PASSED			RB
0400	Rounds Correct.	0400	PM + Messenger Relieved		RB	
0600	Rounds Correct.	0730	35. engine partly piped to clean		RB	
0700	0700	hands piped	0725 hands to breakfast			
0800	Water received	0825	OUTPIPES	0830	HANDS FALL IN.	J.D.
0930	Secure	hands to clean	for divisions			
1000	Hands fall in	for general divisions				
1115	UP spirits	1130	Afternoon watch men to dinner			
1200	Hands to dinner	0719	Messenger relieved	HC 10	Along side RB	

Position	Latitude	Longitude	Depending on	Currents experienced
0800				
1200				
2000				

1330	Liberty Boat			
1430	Liberty Boat			
1600	Watch Relieved	1630	Liberty Boat	RB
1730	Liberty Boat	Hands to Supper	1732	Sunset
1830	Liberty Boat			
2000	Rounds Correct.	Liberty Boat	Watch Relieved	RB
2100	Rounds Correct			RB
2230	Pipe down	2245	guard boat passed	
2400	Watch Relieved			RB



Time	Log (stating type)	Distance Run		Mean Revs. per Minute	True Course	Gyro Compass Course	Standard Compass Course	Deviation	Variation	Wind		Weather and Visibility	Sea and Swell	Corrected Barometric Pressure in Millibars	Temperature °F			
		Miles	Tenths							Direction (true)	Force (0-12)				Dry Bulb	Wet Bulb	Sea	
0100																		
0200																		
0300																		
0400										N	2	C6		1026	34			
0500																		
0600																		
0700																		
0800										NE	2	C6		1026	37			
0900																		
1000																		
1100																		
1200										NE	2	C6		1027	36			

Number on Sick List	Distance run through the Water	Zone Time kept at noon	Leave Granted to Ship's Company	Anchor Bearings
			LEAVE GRANTED TO RED & WHITE WATCHES FROM 1500 TO 0400. C&P 0730 WATCH KEEPERS LEAVE 1030	

1300																		
1400																		
1500																		
1600										NE	4	B7 #4		1026	33			
1700																		
1800																		
1900																		
2000										NNW	7	b6		1025	30			
2100																		
2200																		
2300																		
2400										NNW	1	b6		1025	28			

REMARKS	Initials of the Officer of the Watch
0145 Rounds correct	COB
0400 Round correct Watch Relieved	JH
0630 Slack Hands - 0645 Rounds correct	RB
0700 Hands to Breakfast 0750 Out Pipes 0755 Hands Fall In	RB
0800 Watch Relieved	PR
0900 Colours	
1020 Lighter along side 1050 Lighter slipped	
1115 up spits 1145 secure close up Decks	COB
1200 Hands to Dinner Watch Relieved 1230 Black listmen to Muster	COB

Position	Latitude	Longitude	Depending on	Currents experienced
0800				
1200				
2000				

1305 Out Pipes 1310 Hands fall in 1350 H.C. 10 along side 1400 H.C. 10 Slipped	
1430 secure close up Decks	
1500 Liberty men 1505 H.C. 210 alongside 1515 H.C. 210 slipped 1530 Black listmen <sup>to muster</sup>	
1600 - Q.M. & Messengers relieved 1630 Libertyman	JH
1700 black listmen	
1730 hands to dinner libertymen <sup>1732</sup> sunset	
1830 Libertyman	
1900 Duty Watch exercised fire stations	COB
2000 Liberty boat watch relieved	JH
2100 Rounds correct	JH
2230 - Pipe down	
2	
2400 Watch relieved 2430 - Spanghell alongside	JH



Time	Log (stating type)	Distance Run		Mean Revs. per Minute	True Course	Gyro Compass Course	Standard Compass Course	Deviation	Variation	Wind		Weather and Visibility	Sea and Swell	Corrected Barometric Pressure in Millibars	Temperature °F			
		Miles	Tenths							Direction (true)	Force (0-12)				Dry Bulb	Wet Bulb	Sea	
0100																		
0200																		
0300																		
0400										N	2	b6		1026	30			
0500										N	2	b6		1024	28			
0600																		
0700																		
0800										NNW	2	B7		1025	26			
0900																		
1000																		
1100																		
1200										NE	3	b7		1023	35			

Number on Sick List	Distance run through the Water	Zone Time kept at noon	Leave Granted to Ship's Company		Anchor Bearings
			From	To	
			Leave for White & Blue Watches		
			From 1630 to 0700 C&P at 0730		
			Watchkeepers 1030		

1300																		
1400																		
1500																		
1600										NE	2	b67		1024	42			
1700																		
1800																		
1900																		
2000										NE	2	b67		1020	34			
2100																		
2200																		
2300																		
2400										N	2	b66		1021	32			

REMARKS		Initials of the Officer of the Watch
0040	Rounds correct	AGD
0500	W. Lobs relieved	
0500	Rounds correct. 0630 Ball the hands	AGD
0700	Hands to breakfast 0750 - Out pipes 0755. Hands fall in.	
0800	PM + Messenger relieved. 0800 Rounds correct.	AGD
0900	Column corps toll messes fall in. get watch kit	
1000	1030 start easy 1045 out pipes 1045 - up spurs 1050 - leave	
1000	Requestman & Defaulters (1st lieut)	
1210	Watch Relieved	AGD

Position	Latitude	Longitude	Depending on	Currents experienced
0800				
1200				
2000				

1310	Hands fall in 1330 watchkeepers liberty boat	
1505	Returns gun clear of deck	
1600	Watch Relieved 1630 Liberty Boat	AGD
1730	Liberty Boat. 1733 sunset.	
1830	Liberty Boat	
2000	Liberty Boat. Watch Relieved	AGD
2120	Rounds correct	AGD
2230	Pipe Down 2230 Guard Boat Passed	
2400	Rounds correct. Watch Relieved	AGD



H.M.C.S. STETTLER

WENS day

6 of DECEMBER

1944

From

to

, and at HALIFAX

Time	Log (stating type)	Distance Run		Mean Revs. per Minute	True Course	Gyro Compass Course	Standard Compass Course	Deviation	Variation	Wind		Weather and Visibility	Sea and Swell	Corrected Barometric Pressure in Millibars	Temperature of			
		Miles	Tenths							Direction (true)	Force (0-12)				Dry Bulb	Wet Bulb	Sea	
0100																		
0200																		
0300																		
0400										NNW	32	b.c.7		1020	31			
0500																		
0600																		
0700																		
0800										NNW	2	b.c.7		1021	30			
0900																		
1000																		
1100																		
1200										NE	3	b.c.7		1019	36			



Number on Sick List	Distance run through the Water	Zone Time kept at noon	Leave Granted to Ship's Company	Anchor Bearings
			leave for red & blue watches from 1330 to 0700 hrs. ca P.O. 0730 watch kept 1030.	

1300																		
1400																		
1500																		
1600										NNW	3	b.c.7		1017	39			
1700																		
1800																		
1900																		
2000										NNW	2	b.c.6		1021	35			
2100																		
2200																		
2300																		
2400										NNE	3	b.c.7		1014	34			

REMARKS	Initials of the Officer of the Watch
0430 Watch Relieved	RB
0430 Rounds correct	RB
0630 Call Hands	
0700 Hands to Breakfast 0755 Hands fall in	
0800 watch relieved	COB
0900 colour 0905 mops of deck snow fallen	RB
0915 H.C. 17 alongside	
1030 stand easy 1040 out pipes 1155 H.C. slipped 1115 Up Spirits	RB
1200 Watch Relieved - Hands to dinner 1230 Libertyman entered	RB

Position	Latitude	Longitude	Depending on	Currents experienced
0800				
1200				
2000				

1315 leave piped for red and blue watches 1350 Libertyman fall in	
1450 Libertyman fall in	
1530 Libertyman fall in	
1600 Watch relieved 1630 Liberty boat Black Astern to quarter	J.D
1730 Hands to supper Liberty boat	
1830 Liberty Boat 1845 five drill	RB
1940 HC 210 alongside <sup>1750</sup> HC 22 alongside 1955 HC 22 slipped 1958 HC 210 Slipped	
2000 Liberty Boat 2000 AM + Messenger relieved	RB
2100 Rounds correct	RB
2150 Watch relieved 2457 Guard boat passed	J.D



Time	Log (stating type)	Distance Run		Mean Revs. per Minute	True Course	Gyro Compass Course	Standard Compass Course	Deviation	Variation	Wind		Weather and Visibility	Sea and Swell	Corrected Barometric Pressure in Millibars	Temperature of			
		Miles	Tenths							Direction (true)	Force (0-12)				Dry Bulb	Wet Bulb	Sea	
0100																		
0200																		
0300																		
0400										NW	3	BC6		1021	36			
0500																		
0600																		
0700																		
0800										NW	3	BC6		1024	38			
0900																		
1000																		
1100																		
1200										NNW	1	05		1021	39			

Number on Sick List	Distance run through the Water	Zone Time kept at noon	Leave Granted to Ship's Company <i>Leave for Red &amp; White watches from 1630 to 0700 Ca Pa 0730 Watchkeepers 1030</i>	Anchor Bearings
---------------------	--------------------------------	------------------------	--	-----------------

1300																		
1400																		
1500																		
1600										NNW	3	06		1010	38			
1700																		
1800																		
1900																		
2000										NNW	2	06		1010	36			
2100																		
2200																		
2300																		
2400										NNW	2	BC6		1012	37			

REMARKS		Initials of the Officer of the Watch
0057 - Guard boat passed.		
0140 - Rounds correct		RB
0400 - QM & Messengers relieved. Rounds correct.		RB
0530 - Rounds correct		RB
0630 - Call hands		
0700 - hands to breakfast 0750 - out pipes		
0800 - hands fall in - detailed to clean ship. Watch relieved.		RB
0900 - Colour. Cooks if the mess fall in.		
1000 - Gun team's requirement & defaulter 1030 stand aty. 1031 HC 210 alongside		
1120 - Ops limits 1130 afternoon watchmen to dinner 1150 clear up deck.		
1200 - Hands to dinner QM & messengers relieved. 1230 Black fastened to masts.		

Position	Latitude	Longitude	Depending on	Currents experienced
0800				
1200				
2000				

1300 - swimming party to muster 1325 B.P. 12 slipped 1310 hands fall in 1315 crane B.D. alongside		RB
1430 - Stand Easy 1440 - Out Pipes		
1500 - A/S Ratings to A/S School 1515 - Secure.		
1600 - Watch Relieved		
1630 - Liberty boat 1645 - A/S Rating returned from school		RB
1730 - Liberty boat Hands to supper		
1830 - Liberty boat Hands		
2000 - Watch Relieved Rounds correct 2000 - Liberty boat		RB
2140 - Rounds correct.		RB
2255 - Guard boat passed 2230 - Pipe down		RB
2400 - watch relieved		RB



Time	Log (stating type)	Distance Run		Mean Revs. per Minute	True Course	Gyro Compass Course	Standard Compass Course	Deviation	Variation	Wind		Weather and Visibility	Sea and Swell	Corrected Barometric Pressure in Millibars	Temperature °F			
		Miles	Tenths							Direction (true)	Force (0-12)				Dry Bulb	Wet Bulb	Sea	
0100																		
0200																		
0300																		
0400										NNW	1	b. G.		1013	34			
0500																		
0600																		
0700																		
0800										NNW	1	M.G.		1014	30			
0900																		
1000																		
1100																		
1200										SSE	1	B.G.		1019	36			

Number on Sick List	Distance run through the Water	Zone Time kept at noon	Leave Granted to Ship's Company	Anchor Bearings
			LEAVE FOR WHITE & BLUE WATCHES FROM 1500 TO 0700 02 PM 0730 WATCH KEEPERS 1030	

1300																		
1400										F								
1500																		
1600										ESE	1	B.G.		1019	43			
1700																		
1800																		
1900																		
2000										S	2	B.G.		1019	39			
2100																		
2200																		
2300																		
2400										S	2	B.G.		1019	43			

REMARKS	Initials of the Officer of the Watch
0045 Rounds Correct	AGP
0400 Watch Relieved Rounds Correct	COB
0415 Rounds Correct	AGP
0600 shake blacklistmen 0630 blacklistmen to muster, shake hands	RB
0700 Hands to Breakfast 0750 Out Pipes 0755 Hands fall in	RB
0800 Watch Relieved	RB
0900 colours	
1000 Sub boarding party ashore for instructions 1015 Sub boarding party returned	
1115 M. Spirts 1150 Secure	
1200 Watch Relieved - Hands to Dinner 1230 Black list men to muster	AGP

Position	Latitude	Longitude	Depending on	Currents experienced
0800				
1200				
2000				

1305 OUT PIPES 1310 HANDS FALL IN	
1415 RETURN BEAR CLEAR UP DECKS 1430 SECURE	
1500 LIBERTY BOAT 1530 LIBERTY BOAT	
1600 QM & MESSENGER RELIEVED	AGP
1630 liberty man fall in	second left 1635 1640 1432 SUNSET
1700 blacklistmen mustered, duty watch mustered	1635 blacklistmen along side (2)
1730 hands to dinner, liberty man fall in	
1830 liberty man fall in 2000 liberty man fall in watch relieved	
2045 Rounds correct	
2230 Pipe Down	L.B.
2400 Rounds correct QM & messenger relieved	AGP



Time	Log (stating type)	Distance Run		Mean Revs. per Minute	True Course	Gyro Compass Course	Standard Compass Course	Deviation	Variation	Wind		Weather and Visibility	Sea and Swell	Corrected Barometric Pressure in Millibars	Temperature °F			
		Miles	Tenths							Direction (true)	Force (0-12)				Dry Bulb	Wet Bulb	Sea	
0100																		
0200																		
0300																		
0400										N	5	C7		1017	41			
0500																		
0600																		
0700																		
0800										NW	6	C3		1019	42			
0900																		
1000																		
1100																		
1200										SW	6	C3		1017	40			

Number on Sick List	Distance run through the Water	Zone Time kept at noon	Leave Granted to Ship's Company		Anchor Bearings
			Leave for Red Watch 1300 9/12/44 to 0700 11/12/44. Blue watch from 1300 9/12/44 to 0900 10/12/44.		

1300																		
1400																		
1500																		
1600										SSW	2	C5		1017	42			
1700																		
1800																		
1900																		
2000										SW	2	C6		1014	50			
2100																		
2200										W	1	C6						
2300																		
2400										W	1	C6		1015	48			

REMARKS		Initials of the Officer of the Watch
0015	Rounds correct	
0140	guard boat alongside	
0150	Chart room held Red Coast	
0400	Watch relieved	
0500	Rounds correct	
0600	CALL BLACKLIST MEN 0630 CALL HANDS BLACKLIST MEN TO MUSTER	
0700	Hands to breakfast 0750 OUT PIPES 0800 HANDS FALL IN	
0800	QM & MESSENGER BELIEVED	
0900	columns 0955 clear lower decks to quarter deck	
1140	rounds commenced 1140 rounds finished	
1300	Watch Relieved	

Position	Latitude	Longitude	Depending on	Currents experienced
0800				
1200				
2000				

1300	Liberty boat Blacklistmen to muster	
1400	Liberty boat 1445 H.C.183 alongside with oil for Fuel Eng 1525 H.C.183 slipped	
1500	Liberty boat	
1600	Watch Relieved 1630 Libertymen fall in	
1720	H.M.C.S. Monarch 202 alongside 1730 Liberty Boat alongside	
1830	Liberty Boat 1810 H.C.84 slipped	
1905	H.C.237 alongside 1910 H.C.237 slipped	
2000	Liberty Boat watch relieved	
2100	Rounds correct	
2300	Munich Boat passed	
2400	watch Relieved Rounds correct	



Time	Log (stating type)	Distance Run		Mean Revs. per Minute	True Course	Gyro Compass Course	Standard Compass Course	Deviation	Variation	Wind		Weather and Visibility	Sea and Swell	Corrected Barometric Pressure in Millibars	Temperature °F			
		Miles	Tenths							Direction (true)	Force (0-12)				Dry Bulb	Wet Bulb	Sea	
0100																		
0200																		
0300																		
0400										EV	1	6 bc		1006	40			
0500																		
0600																		
0700																		
0800										W	0	bc6		1019	38			
0900																		
1000																		
1100																		
1200										SW	1	bc7		1022	40			

Number on Sick List	Distance run through the Water	Zone Time kept at noon	Leave Granted to Ship's Company		Anchor Bearings	

1300																		
1400																		
1500																		
1600										W	3	bc6		1019				
1700																		
1800																		
1900																		
2000										WNW	1	bc6		1046	36			
2100																		
2200																		
2300																		
2400										WNW	1	bc7		1057	33			

REMARKS	Initials of the Officer of the Watch
0300 - Rounds Correct	AS
0400 watch relieved	RB
0645 - Rounds Correct	AS
0700 call hands 0715 hands to Breakfast	
0850 Hands fall in watch Relieved	AS
0915 H.C. 20' along in 0925 H.C. 20' slipped 0930 hands fall in watch Relieved	AS
1005 skin lower decks for general check - as usual	
1105 Up Spirits	
1205 watch relieved	AS

Position	Latitude	Longitude	Depending on	Currents experienced
0800				leave for Red & White Water from 1300 to 0400
1200				Ce P Os 0730
2000				water depths 10.50

1300 Liberty men fall in	
1425 Liberty men fall in	
1600 watch relieved 1630 LIBERTY BOAT	
1730 HANDS TO SUPPER LIBERTY BOAT 1732 SUNSET	
1730 LIBERTY BOAT	
2000 Liberty Boat 2000 QM & Messengers relieved 2030 watch relieved	AS
2100 Rounds Correct 2100 watch relieved	AS
2230 Pipe down	
2400 watch relieved	



H.M.C.S. STETLER

Monday 11<sup>th</sup> of DECEMBER

1944 From \_\_\_\_\_ to \_\_\_\_\_, and at HALIFAX

Time	Log (stating type)	Distance Run		Mean Revs. per Minute	True Course	Gyro Compass Course	Standard Compass Course	Deviation	Variation	Wind		Weather and Visibility	Sea and Swell	Corrected Barometric Pressure in Millibars	Temperature of		
		Miles	Tenths							Direction (true)	Force (0-12)				Dry Bulb	Wet Bulb	Sea
0100																	
0200																	
0300																	
0400										WNW	1	BCL	+	1006	35		
0500																	
0600																	
0700																	
0800										WNW	1	BCL		1005	35		
0900																	
1000																	
1100																	
1200										WNW	1	BCL		1004	37		

REMARKS

0030 - Rounds correct - 0100 - 2nd hand found *R.H.*

0400 - DM + Messenger relieved, Rounds correct *R.H.*

0600 Blackfishman called 0615 mustered. 0630 rounds called - Rounds correct *R.H.*

0700 hands in breakfast 0750 - Out Pipes 0755 Hands fall in.

0900 - Q&A DEPT'S 0900 COOKS OF THE MESSES FALL IN

1000 FIRST LIEUT'S REQUEST MEN AND DEFAULTERS TO MUSTER 1030 CAPTAIN'S REQUEST MEN & DEFAULTERS TO MUSTER 1105 CAPTAIN'S REQUEST MEN & DEFAULTERS TO MUSTER 1130 AFTERNOON WATCH TO DINNER

1200 HANDS TO DINNER QM AND MESSENGER RELIEVED 1230 Blackfishman in muster

Number on Sick List	Distance run through the Water	Zone Time kept at noon	Leave Granted to Ship's Company	Anchor Bearings
			LEAVE GRANTED TO WHITE AND BLUE WATCHES FROM 1630 TO 0700 12/12/44 BY PO'S 0730 WATCH KEEPERS 10-30	

Position	Latitude	Longitude	Depending on	Currents experienced
0800				
1200				
2000				

1300																	
1400																	
1500																	
1600										WNW	0	BCL		1016	38		
1700																	
1800																	
1900																	
2000										NE	1	BCL		1015	36		
2100																	
2200																	
2300																	
2400										NE	1	BCL	30	1014	30		

1305 out pipes 1310 Hands fall in 1330 watchkeeper liberty boat

1420 stand easy HC 71 alongside 1440 out pipes 1450 HC 71 slipped

1545 Clear up Decks. See note

1600 Watch relieved 1630 liberty boat

1645 fire stations exercised

1720 liberty boat Hands to Supper

1830 " liberty boat

2000 Liberty boat WATCH RELIEVED

2030 Rounds correct

2230 Pipe Down

2400 Watch Relieved Rounds correct



H.M.C.S. *Stettler*

Tues day 12 of December

19 44

From

to

and at *Halifax*

Time	Log (stating type)	Distance Run		Mean Revs. per Minute	True Course	Gyro Compass Course	Standard Compass Course	Deviation	Variation	Wind		Weather and Visibility	Sea and Swell	Corrected Barometric Pressure in Millibars	Temperature °F		
		Miles	Tenths							Direction (true)	Force (0-12)				Dry Bulb	Wet Bulb	Sea
0100																	
0200																	
0300																	
0400										E 1	bcb			10.16	30		
0500																	
0600																	
0700																	
0800										NE 2	bcb			10.09	38		
0900																	
1000																	
1100																	
1200										SE 8	R5			99.6	40		

Number on Sick List	Distance run through the Water	Zone Time kept at noon	Leave Granted to Ship's Company	Anchor Bearings
			LEAVE GRANTED TO RED WATCH TILL 0700.	

1300																	
1400																	
1500																	
1600										S 2	05			99.2	51		
1700																	
1800																	
1900																	
2000										WNW	3	b6		98.7	45		
2100																	
2200																	
2300																	
2400										WNW	2	06.		99.2	44		

REMARKS	Initials of the Officer of the Watch
0030 Rounds correct	<i>AMH</i>
0135 Guard boat Passed	
0400 Watch Relieved Rounds correct	<i>AMH</i>
0430 Rounds correct	<i>AMH</i>
0600 Blacklistmen called 0630 Blacklistmen to muster <sup>Hands called</sup>	
0700 Hands to Breakfast 0750 out pipes 0755 Hands fall in	
0800 Watch relieved	<i>AMH</i>
0840 Clear up decks with life jackets	
0900 <sup>at anchor</sup>	
0930 Lighter alongside to take gages - 0945 lighter slipped.	
1015 RR guards crew to muster <sup>at gun battery</sup> 1025 Ok crew close up 1030 Stand <sup>easy</sup>	
1115 up spirits 1130 Afternoon watch men to dinner	
1130 W.E. at alongside 1150 clear up decks <sup>secure</sup>	
1155 W.E. at alongside 1200 Hands to dinner watch Relieved	<i>AMH</i>

Position	Latitude	Longitude	Depending on	Currents experienced
0800				
1200				
2000				

1230 - Blacklistmen to muster 1315 Pipe down 1345 Blacklistmen to muster	
1530 - Liberty Boat	
1600 - QMR Messenger relieved 1640 liberty boat	<i>AMH</i>
1700 Blacklistmen	
1730 <sup>sunset ASD</sup> <del>solomon</del> libertymen, hands to supper 1830 libertymen	
1905 - fire stations exercised	<i>AMH</i>
2000 Liberty boat water relieved	<i>AMH</i>
2030 <sup>First Trip</sup> Rounds correct	
2100 Rounds correct	<i>P.B.</i>
2215 - Guard boat passed 2230 Pipe down	
2400 - QMR Messenger relieved Rounds correct	<i>AMH</i>











H.M.C.S.

*Stettler* Friday 15<sup>th</sup> of December

1944

From

to

, and at

*Halifax*

Time	Log (stating type)	Distance Run		Mean Revs. per Minute	True Course	Gyro Compass Course	Standard Compass Course	Deviation	Variation	Wind		Weather and Visibility	Sea and Swell	Corrected Barometric Pressure in Millibars	Temperature of			
		Miles	Tenths							Direction (true)	Force (0-12)				Dry Bulb	Wet Bulb	Sea	
0100																		
0200																		
0300																		
0400										W	0	bcb		1002	26			
0500																		
0600																		
0700																		
0800										W	1	bcb		1004	26			
0900																		
1000																		
1100																		
1200																		

Number on Sick List	Distance run through the Water	Zone Time kept at noon	Leave Granted to Ship's Company	Anchor Bearings
			Leave for white blue watches from 1800 till 0600 ship under way	

1300																		
1400																		
1500																		
1600										NW	3	b7		1008	36			
1700																		
1800																		
1900																		
2000										WNW	1	B7		999	30			
2100																		
2200																		
2300																		
2400										WNW	2	B7		1012	32			

REMARKS	Initials of the Officer of the Watch
0400 Rounds correct Watch Relieved	HMA
0530 Rounds correct	R
0630 Call hands	
0700 Hands to breakfast Rig of the day piped 0730 Close all scuttles & deadlights	
0800 Special sea duty men to muster	HMA

Position	Latitude	Longitude	Depending on	Currents experienced
0800				
1200				
2000				

1400 ship alongside gun boom	
1520 Leave piped	
1600 Watch relieved LIBERTY BOAT 1610 DIVINE BOAT ALONGSIDE	J.D.
1730 - Hands to supper Liberty boat	
1830 - Liberty boat Blacklistmen to muster	
1925 - Duty watch clean up for rounds	
2000 - Liberty boat QM + Messenger relieved	R.H.
2100 - Rounds correct 2130 on pipes clean up duty watch	HMA
2230 Pipe Down	
2400 watch relieved	J.D.











Time	Log (stating type)	Distance Run		Mean Revns. per Minute	True Course	Gyro Compass Course	Standard Compass Course	Deviation	Variation	Wind		Weather and Visibility	Sea and Swell	Corrected Barometric Pressure in Millibars	Temperature °F			
		Miles	Tenths							Direction (true)	Force (0-12)				Dry Bulb	Wet Bulb	Sea	
0100																		
0200																		
0300																		
0400										SE	1	SI		1009	28			
0500																		
0600																		
0700																		
0800										W	1	TS		1000	34			
0900																		
1000																		
1100																		
1200										NW	1	CS		1005	36			

Number on Sick List	Distance run through the Water	Zone Time kept at noon	Leave Granted to Ship's Company <i>leave for white water from 1300 till 0700 E + P.O.S 0430 watch begins 1030.</i>	Anchor Bearings
---------------------	--------------------------------	------------------------	---	-----------------

1300																		
1400																		
1500																		
1600										NW	2	C6		1005	24			
1700																		
1800																		
1900																		
2000										NW	2	C5		1011	26			
2100																		
2200																		
2300																		
2400										NW	1	B1		1010	19			

REMARKS	Initials of the Officer of the Watch
0400 Watch Relieved Rounds correct	<i>CS</i>
0600 Blacklistmen called 0630 Blacklistmen to muster	
0700 Hands to Breakfast. 0750 out pipes 0755 Hands fall in	
0800 Watch Relieved Rounds Correct	<i>MM</i>
0900 Column	
1000 1st Band Report Defaulters	
1120 clear lower deck for General Payment	
1200 Hands to Dinner Watch Relieved 1210 up spouts 1230 Blacklistmen <sup>mustered.</sup>	<i>CS</i>

Position	Latitude	Longitude	Depending on	Currents experienced
0800				
1200				
2000				

1300 clear lower deck 1305 Liberty boat piped 1315 hands fall in	
1330 Liberty boat	
1500 Liberty men piped 1545 secure up decks cleared 1545 supplies brought	
1530 Diving boat alongside	
1600 Watch Relieved Duty Watch mustered 1620 Diving boat away	
1700 Blacklistmen mustered 1735 Sun set	
1730 Liberty men hands to supper	
1830 Liberty men mustered	
1900 duty watch exercised FIRE STATIONS	
2030 duty watch clear upper ranges 2055 Blacklistmen mustered	
2000 Watch Relieved Liberty men mustered & inspected	
2100 Rounds Correct	<i>R.B. CS</i>
2230 Pipe down	
2400 Watch Relieved	<i>J.P.</i>



Time	Log (stating type)	Distance Run		Mean Revs. per Minute	True Course	Gyro Compass Course	Standard Compass Course	Deviation	Variation	Wind		Weather and Visibility	Sea and Swell	Corrected Barometric Pressure in Millibars	Temperature °F			
		Miles	Tenths							Direction (true)	Force (0-12)				Dry Bulb	Wet Bulb	Sea	
0100																		
0200																		
0300																		
0400										NE	1	b7		1010	14			
0500																		
0600																		
0700																		
0800										NW	2	b7		1025	10			
0900																		
1000																		
1100																		
1200										NNW	2	b7		1029	16			
Number on Sick List		Distance run through the Water		Zone Time kept at noon		Leave Granted to Ship's Company				Anchor Bearings								
						Leave for white watch 1800 till 1100 Sunday Dec 24 Blue watch - 1800 till 0700 C/P 0730 Watch laps 1030												
1300																		
1400																		
1500																		
1600										NNW	1	b7		1030	29			
1700																		
1800																		
1900																		
2000										NW	1	b7		1033	30			
2100																		
2200																		
2300																		
2400										NNW	1	b7		1035	12			

REMARKS		Initials of the Officer of the Watch
0010 Rounds Correct		<i>W.P.</i>
0350 Rounds Correct. Watch Relieved		<i>W.P.</i>
0630 hands piped		
0700 - hands fall in.		
0700 hands to breakfast piped 0750 - out pipes		
0800 watch relieved Hands fall in.		<i>W.P.</i>
0900 Colours		
1115 Up spirits 1130 afternoon Watchman to Dinner.		
1150 Return gear, clear up decks		
1200 Hands to Dinner Watch Relieved		<i>C.K.K.</i>

Position	Latitude	Longitude	Depending on	Currents experienced
0800				
1200				
2000				

1330	Clear lower Decks to examination ship	
1430	lighter alongside taking ammunition	
1600	watch Relieved	<i>W.P.</i>
1700	White watch secure	
1736	Sunset, Hands to supper	
1800	Liberty Boat	
1830	Liberty Boat	
2000	Liberty Boat, Rounds correct, Watch Relieved	<i>W.P.</i>
2050	ammunition lighter slipped	
2230	Pipe Down	
2330	Land Boat Passed	
2400	watch Relieved Rounds correct	<i>W.P.</i>



H.M.C.S. *Settler*

Saturday 23rd of December

1944

From

to

, and at *Halifax*

Time	Log (stating type)	Distance Run		Mean Revs. per Minute	True Course	Gyro Compass Course	Standard Compass Course	Deviation	Variation	Wind		Weather and Visibility	Sea and Swell	Corrected Barometric Pressure in Millibars	Temperature °F			
		Miles	Tenths							Direction (true)	Force (0-12)				Dry Bulb	Wet Bulb	Sea	
0100																		
0200																		
0300																		
0400										NW	2	b6		1035	14			
0500																		
0600																		
0700																		
0800										N	1	b5		1035	17			
0900																		
1000																		
1100																		
1200										W	1	C6		1034	24			

Number on Sick List	Distance run through the Water	Zone Time kept at noon	Leave Granted to Ship's Company	Anchor Bearings
			LEAVE FOR REG WATCH FROM 1330 Till 0900. GAPD's 0900 WATCH KEEPERS 1030	

1300																		
1400																		
1500																		
1600										W	1	C6		1026	28			
1700																		
1800																		
1900																		
2000										W	1	C6		1030	32			
2100																		
2200																		
2300																		
2400										SW	1	D6		1027	34			

REMARKS	Initials of the Officer of the Watch
0200 Rounds correct	<i>[Signature]</i>
0400 Rounds correct Watch relieved	<i>[Signature]</i>
0630 Call the Hands	
0700 Hands to Breakfast 0750 out Pipes 0755 Hands fall in	
0800 watch Relieved	<i>[Signature]</i>
0900 Colours	
1200 Watch Relieved 1235 HANDS TO PINNAC	<i>[Signature]</i>

Position	Latitude	Longitude	Depending on	Currents experienced
0800				
1200				
2000				

1330 LIBERTY BOAT	
1400 LIBERTY BOAT	
1600 QM & Messengers relieved 1630 Libertymen	<i>[Signature]</i>
1730 Libertymen 1736 Lisset 1750 H.C. 278 tied station	
1819 H.C. 278 slipped 1830 Libertymen	
2000 Libertymen Watch Relieved	
2100 Rounds correct	<i>[Signature]</i>
2400 Rounds correct	<i>[Signature]</i>



H.M.C.S. *Stitt*

Sunday 24<sup>th</sup> of December

1944

From

to

, and at *Hulbury*

Time	Log (stating type)	Distance Run		Mean Revs. per Minute	True Course	Gyro Compass Course	Standard Compass Course	Deviation	Variation	Wind		Weather and Visibility	Sea and Swell	Corrected Barometric Pressure in Millibars	Temperature °F		
		Miles	Tenths							Direction (true)	Force (0-12)				Dry Bulb	Wet Bulb	Sea
0100																	
0200																	
0300																	
0400										W	2	FB		1023	34		
0500																	
0600																	
0700																	
0800										W	1	FB		1019	39		
0900																	
1000																	
1100																	
1200										NW	1	BC6		1023	32		

Number on Sick List	Distance run through the Water	Zone Time kept at noon	Leave Granted to Ship's Company	Anchor Bearings
			BLUE WATCH FROM 1230 24/12/44 TILL 11. 0126/12/44. WHITE WATCH FROM 1230 24/12/44 TILL 0800 25/12/44. C.P.O.'S 0800. WATCH KEEPER 1030	

1300																	
1400																	
1500																	
1600										NW	1	BC6		1026	32		
1700																	
1800																	
1900																	
2000										NW	1	BC6		1030	26		
2100																	
2200																	
2300																	
2400										NW	1	BC6		1035	24		

REMARKS	Initials of the Officer of the Watch
0230 - Round Correct	R.F.H. <i>AS</i>
Watch Relieved	R.F.H.
0630 Round Correct	<i>AS</i>
0700 Call Hands 0730 Hands to breakfast	
0800 QM & Messengers relieved 0825 Quit Pipes 0830 Hands Fall In	<i>AS</i>
0900 Clouds	
1030 Sun	
1115 Up spiriter 1130 afternoon to dinner	
1200 Watch Relieved	R.F.H.

Position	Latitude	Longitude	Depending on	Currents experienced
0800				
1200				
2000				

1300 Liberty Boat	
1400 Liberty Boat	
1500 Liberty Boat	
1600 Watch Relieved	<i>AS</i>
1630 Liberty Boat 1730 Liberty Boat Hands to Supper	
1730 Sunset 1830 Liberty Boat	
2000 Liberty Boat Watch Relieved	<i>AS</i>
2100 Round Correct	<i>AS</i>
2330 Round Correct	<i>AS</i>
2400 Round Correct Watch relieved	<i>AS</i>



Time	Log (stating type)	Distance Run		Mean Revs. per Minute	True Course	Gyro Compass Course	Standard Compass Course	Deviation	Variation	Wind		Weather and Visibility	Sea and Swell	Corrected Barometric Pressure in Millibars	Temperature °F			
		Miles	Tenths							Direction (true)	Force (0-12)				Dry Bulb	Wet Bulb	Sea	
0100																		
0200																		
0300																		
0400										NW	1	bcb		1025	20			
0500																		
0600																		
0700																		
0800										NW	1	bcb		1033	20			
0900																		
1000																		
1100																		
1200										NW	1	bcb		1036	23			

Number on Sick List	Distance run through the Water	Zone Time kept at noon	Leave Granted to Ship's Company		Anchor Bearings

1300																		
1400																		
1500																		
1600										NW	1	PEB		1028	26			
1700																		
1800																		
1900																		
2000										SW	2	PEB		1030	30			
2100																		
2200																		
2300																		
2400										SW	4	PEB		1026	34			

REMARKS	Initials of the Officer of the Watch
0400 Rounds correct. Watch Relieved	<i>MM</i>
0500 Rounds correct	<i>CB</i>
0630 Call Hands	
0700 Hands to Breakfast	
0800 Rounds correct. Watch Relieved	<i>MM</i>
0805 Out Pipes 0810 Hands fall in	
0900 Colours 0930 Pipe Down 0945 Hands must be for duty	
1000 Liberty men	
1100 Up Spirits 1150 Afternoon Watch over to Dinner	
1200 Watch Relieved. Hands to Dinner	<i>MM</i>

Position	Latitude	Longitude	Depending on	Currents experienced
0800				
1200				
2000				

1330 Liberty men mustered	
1600 Watch relieved	<i>SD</i>
1700 Liberty men 1740 Hands to supper	
1800 Liberty men	
1900 Liberty men	
2000 Liberty men 2005 petty sentry relieved clear up for rounds. 2030 duty must	<i>MM</i>
2100 Rounds correct 2105 petty sentry relieved	<i>MM</i>
2200 petty sentry relieved 2230 pipe down	
2300 petty sentry relieved	
2400 Watch relieved	<i>SD</i>



H.M.C.S.

*Stettin*

Tuesday

26 of December

19 *11*

From

to

, and at *Halifax NS*

Time	Log (stating type)	Distance Run		Mean Revs. per Minute	True Course	Gyro Compass Course	Standard Compass Course	Deviation	Variation	Wind		Weather and Visibility	Sea and Swell	Corrected Barometric Pressure in Millibars	Temperature °F			
		Miles	Tenths							Direction (true)	Force (0-12)				Dry Bulb	Wet Bulb	Sea	
0100																		
0200																		
0300																		
0400										SW	2	06		1030	64			
0500																		
0600																		
0700																		
0800										SW	3	06		1005	48			
0900																		
1000																		
1100																		
1200										SW	2	06		1029	37			

Number on Sick List	Distance run through the Water	Zone Time kept at noon	Leave Granted to Ship's Company	Anchor Bearings
			white watch 1330 to 0700 Chief & P 0730 watchkeepers 1030	

1300																		
1400																		
1500																		
1600										NW	2	06		1030	36			
1700																		
1800																		
1900																		
2000										NW	3	06		1015	22			
2100																		
2200																		
2300																		
2400										NW	4	06		1011	14			

REMARKS	Initials of the Officer of the Watch
0203 Chief CQ & duty LTO called to investigate pantry refrigerator.	
0230 Rounds correct.	
0400 QM & messengers relieved	
0430 Rounds correct.	
0600 hands piped.	
0700 hands in breakfast 0750 out piped 0755 hands fall in	
W. state relieved	
0900 colour.	
1000 Cds of mess fall in 1030 stand easy 1045 out piped	
1115 Up spirits 1130 after noon watchmen to dinner 1150 return	
1200 Hands to dinner QM & messengers relieved	

Position	Latitude	Longitude	Depending on	Currents experienced
0800				
1200				
2000				

1230 Blacklist men to muster 1245 Hucker team in utility	
1305 out pipes 1310 hands fall in	
1330 1st Lieut Request men & Defaulter Liberty boat	
1400 Captains request men & Defaulter 1415 secure	
1530 Hands to stations for shifting ship 1600 Commence shifting	
1735 Hands to supper 1755 Returned to jolly house sunset	
1830 Liberty boat	
1915 Liberty Boat	
2000 Liberty Boat Watch Relieved 2030 Duty Watch to Muster	
2115 Rounds correct 2145 Tanker 243 alongside	
2230 Pipe down	
2400 Rounds correct Watch Relieved	



H.M.C.S.

Stettler

Wed day

27 of December

19 04

From

to

and at

Halifax N.S.

Time	Log (stating type)	Distance Run		Mean Revs. per Minute	True Course	Gyro Compass Course	Standard Compass Course	Deviation	Variation	Wind		Weather and Visibility	Sea and Swell	Corrected Barometric Pressure in Millibars	Temperature °F			
		Miles	Tenths							Direction (true)	Force (0-12)				Dry Bulb	Wet Bulb	Sea	
0100																		
0200																		
0300																		
0400										N	2	66		10.34	10			
0500																		
0600																		
0700																		
0800										N	2	66		10.27	10			
0900																		
1000																		
1100																		
1200										N.W	2	66		10.33	38			

Number on Sick List	Distance run through the Water	Zone Time kept at noon	Leave Granted to Ship's Company	Anchor Bearings
			LEAVE FOR BLUE WATCH FROM 1330 TILL 0700 WHITE WATCH 1150-0910. WATCHKEEPERS - 1030	

1300																		
1400																		
1500																		
1600										NNE	1	B7		10.32	20			
1700																		
1800																		
1900																		
2000										WNW	1	B7		10.34	18			
2100																		
2200																		
2300																		
2400										NNW	1	B6		10.26	22			

REMARKS		Initials of the Officer of the Watch
0000	Rounds correct. Looker stopped	JA
0400	Rounds correct. Watch Relieved	JA
0410	Rounds correct	JA
0600	Blacklist men called 0600 Call Hands. Blacklist men to muster	
0700	Hands to Break Fast. 0750 Out pipes. 0755 Hands fall in	
0800	Rounds correct. Watch Relieved	JA
0900	Colour	
1000	Stand Easy 1045. Out pipes	
1115	Up spirits 1120. Clear lower decks for quarters. Steer was afternoon watch to dinner	
1150	Secure	
1200	Watch Relieved	JA

Position	Latitude	Longitude	Depending on	Currents experienced
0800				
1200				
2000				

1330	Liberty boat	1305	Out pipes	1310	Hands fall in
1400	HC 210 along side	1413	HC 210 slipped	1430	Liberty boat
1524	W05 & W33 along side	1529	W05 & W33 slipped		
1600	Q.M. & Messenger relieved	supplies aboard 1537	colour	1610	duty watch mustered to bring
1530	liberty men mustered				
1930	liberty men mustered	for rounds		1945	duty watch clean up
	watch relieved	0800	Liberty boat		
2030	Rounds correct				
2210	Duty watch muster to carry supplies aboard	2227	Liberty boat passed		
2200	Rounds correct	2350	Duty watch muster for supplies		
2400	Q.M. & Messenger relieved	2030	quarters cleaned		



H.M.C.S.

*Stettler* *Friday* day *28th* of *December*

19 *44* From \_\_\_\_\_ to \_\_\_\_\_, and at *Halifax*

Time	Log (stating type)	Distance Run		Mean Revs. per Minute	True Course	Gyro Compass Course	Standard Compass Course	Deviation	Variation	Wind		Weather and Visibility	Sea and Swell	Corrected Barometric Pressure in Millibars	Temperature °F			
		Miles	Tenths							Direction (true)	Force (0-12)				Dry Bulb	Wet Bulb	Sea	
0100																		
0200																		
0300																		
0400										SW	2	67		1024	24			
0500																		
0600																		
0700																		
0800										SW	4	55		1032	26			
0900																		
1000																		
1100																		
1200										SW	6	55		986	40			

Number on Sick List	Distance run through the Water	Zone Time kept at noon	Leave Granted to Ship's Company	Anchor Bearings
			Ted & blue watch. 1600-0700 2 hours 40 min 0700 All leave expires at 0700	

1300																		
1400																		
1500																		
1600										W	6	55		982	30			
1700																		
1800																		
1900																		
2000										NW	6	66		985	28			
2100																		
2200																		
2300																		
2400										NW	6	66		1000	22			

REMARKS

0400 Watch relieved Round correct.

0515 Callide handed. 0545 Hands to station for leaving Harbour

0622 W05 along side 0634 W06 along side 0639 Slipped

0710 Hands to breakfast 0715 Slipped W05 3 LINES 0739 along side Carl Place pty 3

0800 Q.M. & messenger relieved

0900 Hands fall in - columns

1030 Put heat, equipment & departures

1030 stand easy 1040 out pipes connect to the mess galley

1100 Secure up-decks - Landed dinner

1130 up spirits - afternoon watchman secure

1200 watch relieved

Position	Latitude	Longitude	Depending on	Currents experienced
0800				
1200				
2000				

1310 out Pipes 1315 hands fall in

1430 H.M.C.S. Mornbeam alongside to Refuel 1440

1600 watch relieved 1610 Secure clear up Decks

1700 Liberty Men 1739 Sunset Hands to Supper

1800 Liberty Men 1830 Liberty Men 1840 H.M.C.S. Mornbeam Slip

1925 H.E. 106 slipped - ~~Plating on board~~

2000 Liberty men Watch Relieved

2015 Sub Lt. Mornbeam arrived on board.

2100 Round correct

2230 Pipe down

2350 1.8 p.m. drifted on board

2400 Round correct, watch relieved 0010 Round correct

Initials of the Officer of the Watch

*LD*

*LD*

*LD*

*LD*

*LD*

*LD*











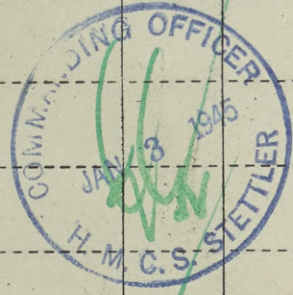
H.M.C.S. *STETTLER*

Sunday 31 of DEC

19 44 From SEA to MULGRAVE and at MULGRAVE

Time	Log (stating type)	Distance Run		Mean Revs. per Minute	True Course	Gyro Compass Course	Standard Compass Course	Deviation	Variation	Wind		Weather and Visibility	Sea and Swell	Corrected Barometric Pressure in Millibars	Temperature °F			
		Miles	Tenths							Direction (true)	Force (0-12)				Dry Bulb	Wet Bulb	Sea	
0100																		
0200																		
0300																		
0400										MNW	1	SG		1026	14			
0500																		
0600																		
0700																		
0800										NW	1	B6		1033	12			
0900																		
1000																		
1100																		
1200										SW	1	C7		1025	24			

*not enough  
core taken*



Number on Sick List	Distance run through the Water	Zone Time kept at noon	Leave Granted to Ship's Company	Anchor Bearings
		+ 3	LEAVE FOR WHITE & BLACK WATCHES FROM 1300 TILL 0300 RED WATCH DUTY HANDS SUBJECT TO RECALL BY FIVE BLASTS OF WHISTLE.	

1300																		
1400																		
1500																		
1600										SW	1	C7		1035	25			
1700																		
1800																		
1900																		
2000																		
2100																		
2200																		
2300																		
2400																		

REMARKS	Initials of the Officer of the Watch
0400 Q.M. & Messengers Relieved. Rounds Correct	<i>ABD</i> <i>CKK</i>
0620 bands piped	
0700 bands piped 0720 bands to crew part	
0800 Q.M. & Messengers relieved. 0825 Q.M. Pipet 0830 Bands fallen	
0900 Aband	
1035 Stand By 1050 Q.M. Pipet	
1115 Up Spirit 1130 afternoon watch men to dinner	
1200 Q.M. & Messengers relieved. Hands to dinner	<i>ABD</i>

Position	Latitude	Longitude	Depending on	Currents experienced
0800				
1200				
2000				

1230 Clear lower Decks to Quarterdeck release 1300 Liberty Boat	
1320 C.C.S. Brant slipped 1400 Liberty boat	
1500 Liberty boat 1530 Recall Hands	
1550 Hands to stations for leaving harbour	
1600 Watch Relieved 1600 Special Duty men close up	<i>ABD</i>
1615 slipped from Mulgrave	











Time	Log (stating type)	Distance Run		Mean Revs. per Minute	True Course	Gyro Compass Course	Standard Compass Course	Deviation	Variation	Wind		Weather and Visibility	Sea and Swell	Corrected Barometric Pressure in Millibars	Temperature °F			
		Miles	Tenths							Direction (true)	Force (0-12)				Dry Bulb	Wet Bulb	Sea	
0100	66.4	15	3															
0200	82.0	15	6															
0300	100.5	18	5															
0400	115.6	15	1	160.8	014	014	N34E	2E	22W	SW	1	C7	11	1026	38		38	
0500																		
0600																		
0700																		
0800				165	017	017	N35E	4E	22W	SE	1	C6	11	1007	36		38	
0900																		
1000																		
1100																		
1200				136	140	140	S18E	1E	23W	SSW	1	S5	11	1014	33		38	

Number on Sick List	Distance run through the Water	Zone Time kept at noon	Leave Granted to Ship's Company		Anchor Bearings
	317.3	+3.			

1300																		
1400																		
1500																		
1600			110.4	121	121	S36E	1W	22W	WNW	2	C7	11	1020	38		38		
1700																		
1800																		
1900																		
2000			108	121	121	S36E	1W	22W	NE	3	C6	12	1014	24		39		
2100																		
2200																		
2300																		
2400			113	121	121	S36E	1W	22W	NE	2	C6	11	1013	27				

Time	REMARKS	Initials of the Officer of the Watch
0010	All gyro repeats checked and found correct.	
0140	Single ship passed steering northward.	
0245	All gun trances and elevated thru full limits of elevation & depression - all correct.	
0315	"4" gun trained & elevated.	
0345	ofc to 014. Depart from Tankers 0350 168 revs.	
0355	W 8 compass.	
0420	Watch relieved. A/S 80-70-70 relative enemy, all around 11E. Radar all around.	PS
0500	Course 017. All gyro repeats checked. Log lost override.	
0515	Exercised 7 search stations.	
0600	Drills instructions given & stand by crew in star shell firing area call of books.	
0630	all guns trained through full limits & elevation.	
0715	Tested depth charge firing clocks & fuzes. Exercised search stations.	
0740	A/S 1127 0145 A/C gun overhaul within radar range.	
0800	Radar all around. A/S 80-80 rel. Revolution counter defective. Watch relieved.	PS
0827	Searchlight bearing 345 0839 white light bearing 036	
0840	Samba 20 light bearing 349 13.5 mi. 28.40. Course 300 300	
0852	Samba light vessel bearing 036 0913 Relief St. Vessel bearing 107 distance 2.4 mi. by Radar	
0921	Passed No. 2 buoy to Port 2 cables 0924 A/C 330 0935 Passed No. 1 buoy to Port 3 cables	
0937	Line stations 0943 gunned group 0945 A/C 090. Hands to quarters to clean guns	
0945	Stationed 1 mile out of range of spray hill	
1006	A/S 140 1017. Searchlight cat gear 1026 Passed "2" buoy to Port 4 cables	
1054	Passed Relief St. Vessel 1 1/2 miles to Port 1100 Entered same station	PS
1200	A/S sweep 80-80. Radar - all around. Watch relieved.	PS

Position	Latitude	Longitude	Depending on	Currents experienced
0800				
1200	44 14.7	63 12.2	DR	
2000				

1236	Course 22. 1239 a/c 325 (01325) 1300 Start 22 NE 20	
1326	a/c 350 (01335) 1342 a/c 390 (01390) 1355 a/c 255 (01255). Convey in sight - visibility improving	
1400	a/c and H.A. equipment inspected. 1405 a/c 125 to take up screening position	
1450	70 Revs. to recover cat gear - H.A. equipment inspected AB	
1500	108 Revs - Cat Gear inboard - in position "X" K	
1525	LOW POWER MOTOR GENERATOR BROKEN DOWN	
1600	Watch relieved. A/S 80-80 relative. Radar all around	PS
1618	LOW POWER MOTOR GENERATOR REPAIRED 1624 NAVIGATION LIGHTS, A/C MARKERS CORRECT	
1634	GYRO REPEATERS CORRECT. 1645 Rec position and signal light including 20" correct	
1630	Bulk on deck mustered. Communication equipment inspected. AD	
1747	Ship declared. 1750 EXERCISED ACTION STATIONS 1824 EXERCISED SEARCH STATIONS	
1845	"4" training watch to drill. 1900 Bushmabes visited in P. generator working very poorly.	
2000	A/S 80-80 rel. Radar all around. Watch relieved.	PS
2015	USS Kirby signalled to keep clear of convey.	
2020	2020 70 revs. complete correct.	
2100	712 reported defective. 2130. 300 tested by S.O. not successful.	
2210	Searchlighting light sighted on horizon. 2235 light from Japanese regarding stations.	
2235	to forward gear stations.	
2315	all guns trained & elevated to full limits. Communications tested.	
2400	A/S 20-20. Radar all around. Suppression 1133. Watch relieved.	PS



H.M.C.S. STETTLER

THURSDAY

11<sup>th</sup> of JANUARY

1945

From

to

and at SEA

Time	Log (stating type)	Distance Run		Mean Revs. per Minute	True Course	Gyro Compass Course	Standard Compass Course	Deviation	Variation	Wind		Weather and Visibility	Sea and Swell	Corrected Barometric Pressure in Millibars	Temperature °F			
		Miles	Tenths							Direction (true)	Force (0-12)				Dry Bulb	Wet Bulb	Sea	
0100																		
0200																		
0300																		
0400				11.2	121	121	S 36E	23W	N	2	C7	12	1014	26	42			
0500																		
0600																		
0700																		
0800				126.7	121	121	S 34E	2W 23W	NW	3	56	23	1016	34	39			
0900																		
1000																		
1100																		
1200				134	078	078	S 81E	2E 23W	NW	3	607	23	1020	30	38			

Number on Sick List	Distance run through the Water	Zone Time kept at noon	Leave Granted to Ship's Company		Anchor Bearings
	308.8	+3.			

1300																		
1400																		
1500																		
1600			134	068	068	N 88E	3E 23W	NW	2	67	22	1020	34	38				
1700																		
1800																		
1900																		
2000			134	078	078	S 81E	3E 24W	NW	2	67	22	1022	30	43				
2100																		
2200																		
2300																		
2400			133	078	078	S 81E	3E 24W	NW	1	66	11	1021	32	42				

REMARKS	Initials of the Officer of the Watch
0015 All gyro repeats checked and found correct.	
0210 Scare stations exercised - D/C firing clock & Buzzers checked & found correct.	
0230 All guns trained & elevated thru full limits - St. bridge Oerlikon switch inoperative	
0400 Watch relieved. In position "XK" independent ZC. A1580-80 relative every 3 <sup>rd</sup> hours all around H.E. Radar all around.	GPB
0500 checked Gyros. Tested buzzers. Exercised Scare Stations. all guns trained through elevation & limits	
0515 Increased speed to 12.5 knots. 0605 Kirkland take up position "S".	
0640 - Kirkland take took up position "S".	
0720 - Lower Tower Room reported everything bearing equal strain? Electric circuits correct.	
0800 - Radar all around. A1580-80 and L.P.M.G. working favorably. Watch relieved.	
0830 - Hands fall in. Employed painting & cleaning part of ship.	
0915 - All gyro repeats checked - 0915 Short range weapons exercised.	
0923 - Increased scare stations 0950 Ammunition and magazines inspected OK.	
1054 - A/C 078 - 10.58 all guns trained & elevated to full limits.	
1118 - RT OUT OF ORDER - 11.41 RT repaired and trouble not found.	
1200 - AIR SWEEP 20-20. RADAR - ALL ROUND. WATCH RELIEVED.	AD

Position	Latitude	Longitude	Depending on	Currents experienced	Oil fuel	Expansions	Resistivity	Fresh Water	Expansions
0800					573.4	29.4	98.9	28.7	7.5
1200	42° 44' N	59° 32' W	LORAN						
2000									

1230 All gyros checked and found correct	
1330 - Course altered course to 102° speed 9.5 KTS.	
1400 Scare stations exercised. D/C firing clock checked & correct.	
1430 Conduy course 0650 - 8.5 knots.	
1430 H.H. and D/C equipment inspected OK.	
1445 D/C equipment inspected OK.	
1600 Watch relieved. A15 20-70 relative. Radar stand-by.	GPB
1605 Navigational lights A/B ma-hus correct.	
1645 NIKS & recognition lights tested and correct. 1733 Exercised scare stations.	
1700 Books on lan mustered. Communication equipment inspected OK.	
1720 Exercise action. 1802 Scare action. 1812 Gun repeaters correct. 1815 Ship debarked.	
1817 HFDH intercom test with SO. - correct. 1840 EXERCISE SCARE STATIONS.	
1854 - No warning. BELL TESTED.	
2000 - AIR SWEEP 20-20. RADAR - ALL ROUND. WATCH RELIEVED.	AD
2015 Gyro repeats checked. 2030 First limits found correct.	
2100 - Watch being run on oil burner. 2115 - After work on reported pump stop shell by 210°.	
2120 - Pumping of water completed. 2121 - Holes stopped by 001's at 270°.	
2145 - O.D. to bridge phone call up out of order. - 2155 - Exercised scare stations.	
2230 - Still out of order reported. 2235 - Defective motor repaired.	
2300 - Radar all around. A15 20-80 rel every 2 <sup>nd</sup> hour all around H.E. Watch relieved.	AD



Time	Log (stating type)	Distance Run		Mean Revs. per Minute	True Course	Gyro Compass Course	Standard Compass Course	Deviation	Variation	Wind		Weather and Visibility	Sea and Swell	Corrected Barometric Pressure in Millibars	Temperature of			
		Direction (true)	Force (0-12)							Dry Bulb	Wet Bulb				Sea			
0100																		
0200																		
0300																		
0400				134	078	078	581E4E	25W	NW	2	C6	24	1022	34	39			
0500																		
0600																		
0700																		
0800				134	078	078	578E	1E	25W	NE	2	C6	12	1022	33	40		
0900																		
1000																		
1100																		
1200				134	078	078	577E	1E	26W	NNE	3	C6	24	1020	36	42		

Number on Sick List	Distance run through the Water	Zone Time kept at noon	Leave Granted to Ship's Company	Anchor Bearings
	348	+3		

1300																		
1400																		
1500																		
1600				128	078	078	577E	1E	26W	N	6	Y54	34	1016	32	42		
1700														1015				
1800										NNE	5	Y5	33	1016				
1900														1016				
2000				99.9	078	078	576E	26W	NNE	5	Y4	33	1016	36	42			
2100																		
2200																		
2300																		
2400				96	078	078	676E	-	21W	NNE	3	C5	33	1013	38	43		

REMARKS	Initials of the Officer of the Watch
0015 ALL GYRO REPEATS checked and found CORRECT.	
0125 All guns trained & elevated thru full limits	
0230 Scare stations exercised. D/C firing clock tested & correct.	
0400 - A/S go. go. Ret. All sound N.E. every 3 <sup>rd</sup> - Radar all round - Watch relieved	AB
0410 gyro repeats checked. D/C warning buzzers, #1 & #2 firing clock correct.	
0515 Course seas.	
0610 all guns trained & elevated thru limits, communications correct.	
0630 Call the books. 0700 Wash to breakfast.	
0715 Course seas.	
0800 Radar all around 0750 to 0800. Watch relieved	A
0930. Exercised scare stations.	
0915 - all gyro repeats checked. 0930. Short range exercises.	
0930 - Long range emergency turns. 0942. Increased screening distance to 15,000 yds.	
1000. Bunk to quarters to clean guns. 1030 Long range exercises. A/S fire sea stand easy.	
1045 Ant pipes 1,000 Amament rounds correct.	
1200 - D/S go. go. Radar - all round - tested 1015 with Chulattawa. Watch relieved.	AB

Position	Latitude	Longitude	Depending on	Currents experienced
0800				
1200	43 22 N	54 15 W	D.P.	
2000				

1300	Both D/S go. Radar correct	
1235	Gyro repeats checked & correct. 1300 Snowing heavily. Visibility very poor. A/S shut down.	AB
1316	Distance from convoy to be 6 miles	
1430	all guns trained, elevated, depressed thru full limits.	
1445	A/S operating. 1430 #4 and D/C equipment inspected. #1 & #2	
1500	Wind freshening to gale force. Ship pounding & heaving, taking considerable water over bridge. D/C equipment inspected. #1 & #2	AB
1600	A/S go. go. Ret. - Radar all around - Watch relieved	
1614	gyro repeats checked. 1637 - 98 revolutions	
1735	Ship darkened.	
1745	Bunks on lower mustered. Communication equipment inspected. #1 & #2 D/C loops defective	AB
1800	Rain wind dropping slightly.	
2000	Ship pounding, taking some water over rail. A/S go. Radar all around. Watch relieved	AB
2030	Sighted white light flashing 3 times. Front light rounds correct.	
2100	All guns trained, elevated & depressed thru full limits. Communications tested & found correct.	
2305	Gyro repeats checked & found correct.	
2400	Weather moderating. A/S go. go. every 3 <sup>rd</sup> sweep all around N.E. Radar all around. Watch relieved.	AB







Time	Log (stating type)	Distance Run		Mean Revs. per Minute	True Course	Gyro Compass Course	Standard Compass Course	Deviation	Variation	Wind		Weather and Visibility	Sea and Swell	Corrected Barometric Pressure in Millibars	Temperature °F			
		Miles	Tenths							Direction (true)	Force (0-12)				Dry Bulb	Wet Bulb	Sea	
0100																		
0200																		
0300																		
0400				136	257	257	N 76 W	2W	25W	SSW	1	C 7	11	1023	42		40	
0500																		
0600																		
0700																		
0800				138.6	257	257	N 74 W	4W	25W	W	0	C 7	00	1024	41		38	
0900																		
1000																		
1100																		
1200				136	257	257	N 74 W	4W	25W	NNW	0	C 2	00	1025	42		38	

Number on Sick List	Distance run through the Water	Zone Time kept at noon	Leave Granted to Ship's Company	Anchor Bearings
	354	13		

1300																		
1400																		
1500																		
1600				136	257	257	N 74 W	5W	24W	N	2	E 95	02	1026	40		38	
1700																		
1800																		
1900																		
2000				137.9	257	257	N 73 W	6W	23W	NE	2	E 94	11	1024	41		38	
2100																		
2200																		
2300																		
2400				131.1	257	257	N 75 W	4W	23W	NW	1	C 5	11	1022	44		38	

0010 All gun repeats correct.

0200 All guns trained and elevated thru full limits. Commun. correct. Scare stations exercised - D/C firing clock & buzzers correct.

0400 Watch relieved. AIS 70-70 relative every 3 sweeps all around H.S. Radar all around.

0500 - Exercised depth scare stations. Tested depth chg. clock & warning buzzers. Gyro's checked.

0530 All gun trained & elevated thru limits, communications correct.

0630 Call the hands. 0700 Thudstr. breakfast.

0800 Hands to clean ship. Sunday routine.

0800 AIS 70-70 rel. Radar all around. Watch relieved.

0845 Exercised scare stations for D/C and Quilken crew. 0846 AIS shut down for tuning.

0922 Visibility closed down to 2 cables. 0942 Exercised small arms.

0930 Quarters clean guns.

1000 Appearance of magazines inspected. 1045 D/C scare stations exercised.

1030 Scare.

1115 Up spirits.

1200 AIS sweep 70-70. Radar all around. Watch relieved.

Position	Latitude	Longitude	Depending on	Currents experienced	Oil Fuel Expenditure	Percentage	Fresh water Expenditure
0800					444.7 tons		
1200	43° 41'	58° 38'	LORAN		47.3 tons	68%	24.2 tons
2000							11 tons

0030 All gyro repeats checked & correct.

1430 Scare stations exercised.

1440 D/C firing clock and buzzers tested & correct.

1500 Watch relieved. 1515 AIS equipment inspected. NO.

1600 Watch relieved. AIS 70-70 relative. Radar all around.

1625 Exercise D/C scare stations - D/C firing clock and buzzers correct.

1630 Alarm gong, navigation lights, and D/C mast light tested and correct.

1645 Recognition light correct. 1705 Traverses streaming cat gear. Time 1 minute.

1710 Recovery cat gear. 1714 Cat gear recovered. 1715 Ship darkened.

1715 AIS equipment inspected. 1715 Ship darkened.

1800 Exercised action stations.

1950 Starshelled by Bottleford.

2000 Rain commencing. AIS 70-70 rel. Radar all around. Watch relieved.

2015 Gyr repeats checked & found correct.

2015 All gun repeats checked. 2122 Suggested 4" gun defective probably short of T.O.

2030 Short range radar. 2030 4" gun defective probably short of T.O.

2148 Radar contact 202 4 miles. 2051 Action stations. 2205 Contact found to be fishing schooner.

2210 Action stations practiced.

2230 All guns trained, elevated & depressed thru full limits. Communications tested & found correct.

2310 - Fog lifted. Visibility improving.

2400 - AIS 70-70 rel every 3 sweeps all around H.S. Radar all around. Watch relieved.

GPB

NO

GPB

NO



H.M.C.S. *Stettler*

Monday 15<sup>th</sup> of JAN.

Time	Log (stating type)	Distance Run		Mean Revs. per Minute	True Course	Gyro Compass Course	Standard Compass Course	Deviation	Variation	Wind		Weather and Visibility	Sea and Swell	Corrected Barometric Pressure in Millibars	Temperature °F			
		Miles	Tenths							Direction (true)	Force (0-12)				Dry Bulb	Wet Bulb	Sea	
0100																		
0200																		
0300																		
0400				136	257	257	N75W	6W	22W	S	2	bc7	24	1020	43	42		
0500																		
0600																		
0700																		
0800				109.9			Course		22W	S	3	c6	23	1021	42	42		
0900																		
1000																		
1100																		
1200				127.7	006	006	N24E	4E	22W	SE	3	c4	22	1019	47	39		

Number on Sick List	Distance run through the Water	Zone Time kept at noon	Leave Granted to Ship's Company		Anchor Bearings	
	335	+3.				

1300																		
1400																		
1500																		
1600			143.1	294	294	N41W	2W	23W	SW	2	1/2	24	24	1020	40	36		
1700																		
1800																		
1900																		
2000			103.5	180	180	S27W	4W	23W	W	2	62	24	24	1023	36	36		
2100																		
2200																		
2300																		
2400			566	180	180	S27W	4W	23W	W	2	C4	22	22	1025	36	36		

1945 From

to

and at Sea.



REMARKS	Initials of the Officer of the Watch
0015 All Gyros checked Found CORRECT	
0113 All guns TRAINER AND ELEVATED Thru Full Limits comm. tested and CORRECT.	
0200 EXERCISED SCARE STATIONS. Buzzers and Firing clocks CORRECT.	
0400 Watch relieved. A/S 70-70 relative every 3rd sweep all around listening Radar all around.	GP
0415 Gyro repeater checked. 0435 24 firing buzzers, 24 H.H. firing clock correct.	
0445 Ship developing more, this list. Wind increasing.	
0630 Moving to stid. leaving main company. Call the hands. 0655 108 revs. 0659 90 revs.	
0703 70 revs.	
0707 Hands to breakfast	
0745 Halifax section of convoy detaching. Proceeding to take up position "E"	
0800 150 Revs. Radar all around. Scanning occasionally. A/S 70-70 rad. watch, when d	GP
0807 In position "E" Halifax section convoy ON 276. Aldis Lamp out of order.	
0821 Aldis Lamp repaired. 0832 Course of convoy 25% speed 10 knots	
0850 Gyro repeater checked - 0930 short range weapons exercised	
0930 Aldis Lamp clear course. 0945 speed 10.5 knots 1030 stand easy	
1045 out pipes. 1045 Convoy speed 11 knots 1056 course of scare stations	
1104 Guns trained and elevated to full limits 1125 Up Spirits	
1130 Antisubmerging ships as to their PT's numbers -	
1200 A/S 70-70 rel. Radar all around. watch relieved	GP

Position	Latitude	Longitude	Depending on	Currents experienced	OIL FUEL No. 4 Consumption Percentage	Expenditure	Fresh Water Expenditure
0800					63.2		
1200	43° 38'	67° 50'	WOBAN		36.4	25.1	10
2000							

1206-45 Revs. 1340 CAT streamed.	
1400 Scare stations exercised - D/C Firing Clicker buzzers correct.	
1425 a/c 294 - Convoy formed line ahead - Screening 51 Beam.	
1430 On and H.H. equipment inspected. 1442 Fire One D/C - 1450 Fire one D/C - 1459 Fire one D/C - 1506 Fire one D/C - 1515 Fire one D/C	
1525 Fire one D/C - stopped firing due to decreased Vis.	
1527 A/S equipment inspected GP.	GP
1600 Watch relieved. A/S 70-70 rel. Radar all around.	
1610 gyro repeater checked. 1615 Exercise scare stations.	
1629 Dinner automatic buoy hose 260. 3000 yds. Devils Jels. Lt. base 000.	
1630 E/S 14 ft. Convoy 11 x 322 leaving gate. 1635 Just after station bells. Navigation lights correct.	
1635 100 ft. log installed. Convoy 11 x 322. 1640 11 x 322. 1645 11 x 322. 1650 11 x 322. 1655 11 x 322. 1700 11 x 322. 1705 11 x 322. 1710 11 x 322. 1715 11 x 322. 1720 11 x 322. 1725 11 x 322. 1730 11 x 322. 1735 11 x 322. 1740 11 x 322. 1745 11 x 322. 1750 11 x 322. 1755 11 x 322. 1800 11 x 322. 1805 11 x 322. 1810 11 x 322. 1815 11 x 322. 1820 11 x 322. 1825 11 x 322. 1830 11 x 322. 1835 11 x 322. 1840 11 x 322. 1845 11 x 322. 1850 11 x 322. 1855 11 x 322. 1900 11 x 322. 1905 11 x 322. 1910 11 x 322. 1915 11 x 322. 1920 11 x 322. 1925 11 x 322. 1930 11 x 322. 1935 11 x 322. 1940 11 x 322. 1945 11 x 322. 1950 11 x 322. 1955 11 x 322. 2000 11 x 322. 2005 11 x 322. 2010 11 x 322. 2015 11 x 322. 2020 11 x 322. 2025 11 x 322. 2030 11 x 322. 2035 11 x 322. 2040 11 x 322. 2045 11 x 322. 2050 11 x 322. 2055 11 x 322. 2100 11 x 322. 2105 11 x 322. 2110 11 x 322. 2115 11 x 322. 2120 11 x 322. 2125 11 x 322. 2130 11 x 322. 2135 11 x 322. 2140 11 x 322. 2145 11 x 322. 2150 11 x 322. 2155 11 x 322. 2200 11 x 322. 2205 11 x 322. 2210 11 x 322. 2215 11 x 322. 2220 11 x 322. 2225 11 x 322. 2230 11 x 322. 2235 11 x 322. 2240 11 x 322. 2245 11 x 322. 2250 11 x 322. 2255 11 x 322. 2300 11 x 322. 2305 11 x 322. 2310 11 x 322. 2315 11 x 322. 2320 11 x 322. 2325 11 x 322. 2330 11 x 322. 2335 11 x 322. 2340 11 x 322. 2345 11 x 322. 2350 11 x 322. 2355 11 x 322. 2400 11 x 322. 2405 11 x 322. 2410 11 x 322. 2415 11 x 322. 2420 11 x 322. 2425 11 x 322. 2430 11 x 322. 2435 11 x 322. 2440 11 x 322. 2445 11 x 322. 2450 11 x 322. 2455 11 x 322. 2500 11 x 322. 2505 11 x 322. 2510 11 x 322. 2515 11 x 322. 2520 11 x 322. 2525 11 x 322. 2530 11 x 322. 2535 11 x 322. 2540 11 x 322. 2545 11 x 322. 2550 11 x 322. 2555 11 x 322. 2600 11 x 322. 2605 11 x 322. 2610 11 x 322. 2615 11 x 322. 2620 11 x 322. 2625 11 x 322. 2630 11 x 322. 2635 11 x 322. 2640 11 x 322. 2645 11 x 322. 2650 11 x 322. 2655 11 x 322. 2700 11 x 322. 2705 11 x 322. 2710 11 x 322. 2715 11 x 322. 2720 11 x 322. 2725 11 x 322. 2730 11 x 322. 2735 11 x 322. 2740 11 x 322. 2745 11 x 322. 2750 11 x 322. 2755 11 x 322. 2800 11 x 322. 2805 11 x 322. 2810 11 x 322. 2815 11 x 322. 2820 11 x 322. 2825 11 x 322. 2830 11 x 322. 2835 11 x 322. 2840 11 x 322. 2845 11 x 322. 2850 11 x 322. 2855 11 x 322. 2900 11 x 322. 2905 11 x 322. 2910 11 x 322. 2915 11 x 322. 2920 11 x 322. 2925 11 x 322. 2930 11 x 322. 2935 11 x 322. 2940 11 x 322. 2945 11 x 322. 2950 11 x 322. 2955 11 x 322. 3000 11 x 322. 3005 11 x 322. 3010 11 x 322. 3015 11 x 322. 3020 11 x 322. 3025 11 x 322. 3030 11 x 322. 3035 11 x 322. 3040 11 x 322. 3045 11 x 322. 3050 11 x 322. 3055 11 x 322. 3100 11 x 322. 3105 11 x 322. 3110 11 x 322. 3115 11 x 322. 3120 11 x 322. 3125 11 x 322. 3130 11 x 322. 3135 11 x 322. 3140 11 x 322. 3145 11 x 322. 3150 11 x 322. 3155 11 x 322. 3200 11 x 322. 3205 11 x 322. 3210 11 x 322. 3215 11 x 322. 3220 11 x 322. 3225 11 x 322. 3230 11 x 322. 3235 11 x 322. 3240 11 x 322. 3245 11 x 322. 3250 11 x 322. 3255 11 x 322. 3300 11 x 322. 3305 11 x 322. 3310 11 x 322. 3315 11 x 322. 3320 11 x 322. 3325 11 x 322. 3330 11 x 322. 3335 11 x 322. 3340 11 x 322. 3345 11 x 322. 3350 11 x 322. 3355 11 x 322. 3400 11 x 322. 3405 11 x 322. 3410 11 x 322. 3415 11 x 322. 3420 11 x 322. 3425 11 x 322. 3430 11 x 322. 3435 11 x 322. 3440 11 x 322. 3445 11 x 322. 3450 11 x 322. 3455 11 x 322. 3500 11 x 322. 3505 11 x 322. 3510 11 x 322. 3515 11 x 322. 3520 11 x 322. 3525 11 x 322. 3530 11 x 322. 3535 11 x 322. 3540 11 x 322. 3545 11 x 322. 3550 11 x 322. 3555 11 x 322. 3600 11 x 322. 3605 11 x 322. 3610 11 x 322. 3615 11 x 322. 3620 11 x 322. 3625 11 x 322. 3630 11 x 322. 3635 11 x 322. 3640 11 x 322. 3645 11 x 322. 3650 11 x 322. 3655 11 x 322. 3700 11 x 322. 3705 11 x 322. 3710 11 x 322. 3715 11 x 322. 3720 11 x 322. 3725 11 x 322. 3730 11 x 322. 3735 11 x 322. 3740 11 x 322. 3745 11 x 322. 3750 11 x 322. 3755 11 x 322. 3800 11 x 322. 3805 11 x 322. 3810 11 x 322. 3815 11 x 322. 3820 11 x 322. 3825 11 x 322. 3830 11 x 322. 3835 11 x 322. 3840 11 x 322. 3845 11 x 322. 3850 11 x 322. 3855 11 x 322. 3900 11 x 322. 3905 11 x 322. 3910 11 x 322. 3915 11 x 322. 3920 11 x 322. 3925 11 x 322. 3930 11 x 322. 3935 11 x 322. 3940 11 x 322. 3945 11 x 322. 3950 11 x 322. 3955 11 x 322. 4000 11 x 322. 4005 11 x 322. 4010 11 x 322. 4015 11 x 322. 4020 11 x 322. 4025 11 x 322. 4030 11 x 322. 4035 11 x 322. 4040 11 x 322. 4045 11 x 322. 4050 11 x 322. 4055 11 x 322. 4100 11 x 322. 4105 11 x 322. 4110 11 x 322. 4115 11 x 322. 4120 11 x 322. 4125 11 x 322. 4130 11 x 322. 4135 11 x 322. 4140 11 x 322. 4145 11 x 322. 4150 11 x 322. 4155 11 x 322. 4200 11 x 322. 4205 11 x 322. 4210 11 x 322. 4215 11 x 322. 4220 11 x 322. 4225 11 x 322. 4230 11 x 322. 4235 11 x 322. 4240 11 x 322. 4245 11 x 322. 4250 11 x 322. 4255 11 x 322. 4300 11 x 322. 4305 11 x 322. 4310 11 x 322. 4315 11 x 322. 4320 11 x 322. 4325 11 x 322. 4330 11 x 322. 4335 11 x 322. 4340 11 x 322. 4345 11 x 322. 4350 11 x 322. 4355 11 x 322. 4400 11 x 322. 4405 11 x 322. 4410 11 x 322. 4415 11 x 322. 4420 11 x 322. 4425 11 x 322. 4430 11 x 322. 4435 11 x 322. 4440 11 x 322. 4445 11 x 322. 4450 11 x 322. 4455 11 x 322. 4500 11 x 322. 4505 11 x 322. 4510 11 x 322. 4515 11 x 322. 4520 11 x 322. 4525 11 x 322. 4530 11 x 322. 4535 11 x 322. 4540 11 x 322. 4545 11 x 322. 4550 11 x 322. 4555 11 x 322. 4600 11 x 322. 4605 11 x 322. 4610 11 x 322. 4615 11 x 322. 4620 11 x 322. 4625 11 x 322. 4630 11 x 322. 4635 11 x 322. 4640 11 x 322. 4645 11 x 322. 4650 11 x 322. 4655 11 x 322. 4700 11 x 322. 4705 11 x 322. 4710 11 x 322. 4715 11 x 322. 4720 11 x 322. 4725 11 x 322. 4730 11 x 322. 4735 11 x 322. 4740 11 x 322. 4745 11 x 322. 4750 11 x 322. 4755 11 x 322. 4800 11 x 322. 4805 11 x 322. 4810 11 x 322. 4815 11 x 322. 4820 11 x 322. 4825 11 x 322. 4830 11 x 322. 4835 11 x 322. 4840 11 x 322. 4845 11 x 322. 4850 11 x 322. 4855 11 x 322. 4900 11 x 322. 4905 11 x 322. 4910 11 x 322. 4915 11 x 322. 4920 11 x 322. 4925 11 x 322. 4930 11 x 322. 4935 11 x 322. 4940 11 x 322. 4945 11 x 322. 4950 11 x 322. 4955 11 x 322. 5000 11 x 322. 5005 11 x 322. 5010 11 x 322. 5015 11 x 322. 5020 11 x 322. 5025 11 x 322. 5030 11 x 322. 5035 11 x 322. 5040 11 x 322. 5045 11 x 322. 5050 11 x 322. 5055 11 x 322. 5100 11 x 322. 5105 11 x 322. 5110 11 x 322. 5115 11 x 322. 5120 11 x 322. 5125 11 x 322. 5130 11 x 322. 5135 11 x 322. 5140 11 x 322. 5145 11 x 322. 5150 11 x 322. 5155 11 x 322. 5200 11 x 322. 5205 11 x 322. 5210 11 x 322. 5215 11 x 322. 5220 11 x 322. 5225 11 x 322. 5230 11 x 322. 5235 11 x 322. 5240 11 x 322. 5245 11 x 322. 5250 11 x 322. 5255 11 x 322. 5300 11 x 322. 5305 11 x 322. 5310 11 x 322. 5315 11 x 322. 5320 11 x 322. 5325 11 x 322. 5330 11 x 322. 5335 11 x 322. 5340 11 x 322. 5345 11 x 322. 5350 11 x 322. 5355 11 x 322. 5400 11 x 322. 5405 11 x 322. 5410 11 x 322. 5415 11 x 322. 5420 11 x 322. 5425 11 x 322. 5430 11 x 322. 5435 11 x 322. 5440 11 x 322. 5445 11 x 322. 5450 11 x 322. 5455 11 x 322. 5500 11 x 322. 5505 11 x 322. 5510 11 x 322. 5515 11 x 322. 5520 11 x 322. 5525 11 x 322. 5530 11 x 322. 5535 11 x 322. 5540 11 x 322. 5545 11 x 322. 5550 11 x 322. 5555 11 x 322. 5600 11 x 322. 5605 11 x 322. 5610 11 x 322. 5615 11 x 322. 5620 11 x 322. 5625 11 x 322. 5630 11 x 322. 5635 11 x 322. 5640 11 x 322. 5645 11 x 322. 5650 11 x 322. 5655 11 x 322. 5700 11 x 322. 5705 11 x 322. 5710 11 x 322. 5715 11 x 322. 5720 11 x 322. 5725 11 x 322. 5730 11 x 322. 5735 11 x 322. 5740 11 x 322. 5745 11 x 322. 5750 11 x 322. 5755 11 x 322. 5800 11 x 322. 5805 11 x 322. 5810 11 x 322. 5815 11 x 322. 5820 11 x 322. 5825 11 x 322. 5	







Time	Log (stating type)	Distance Run		Mean Revs. per Minute	True Course	Gyro Compass Course	Standard Compass Course	Deviation	Variation	Wind		Weather and Visibility	Sea and Swell	Corrected Barometric Pressure in Millibars	Temperature °F			
		Miles	Tenths							Direction (true)	Force (0-12)				Dry Bulb	Wet Bulb	Sea	
0100																		
0200										ESE								
0300										SE								
0400				107.2	086	086	573E	3E	24W	S	4	7.6	24	10.17	46		38	
0500																		
0600																		
0700																		
0800				116	086	086	571E	1E	24W	S	3	6.6	13	10.5	44		36	
0900																		
1000																		
1100																		
1200				194.9	086	086	571E	1E	24W	S	3	6.6	24	10.14	46		38	

Number on Sick List	Distance run through the Water	Zone Time kept at noon	Leave Granted to Ship's Company	Anchor Bearings
	309.8	+3		

1300																		
1400																		
1500																		
1600				110	086	086	570E	1E	25W	ESE	3	6.6	24	10.13	44		36	
1700																		
1800																		
1900																		
2000				110.2	086	086	570E	1E	25W	ESE	3	7.5	24	10.11	44		36	
2100																		
2200																		
2300														10.09				
2400				97	086	086	570E	1E	25W	S	3	7.4	33	10.08	44		36	

Time	REMARKS	Initials of the Officer of the Watch
0025	Gyro repeats correct.	
0130	Scare stations exercised. D/C firing clock & warning buzzers checked. Communications tested and correct.	
0200	Reeds & stuffing to southward. All guns trained and elevated thru full limits of Communications Correct.	
0215	118 revs.	
0400	Watch relieved. A/S 70-70 relative, every 3rd all around listening Radar all around. 0400 gyro repeats correct. 0422 warning buzzers, H1A + H2C firing clock correct.	
0500	Equally listening.	
0600	All guns trained & elevated thru limits, communications correct.	
0740	Exercise scare stations.	
0800	Position 7W, screening 50165. Radar all around. Watch relieved.	
0814	Gyro repeater checked.	
0825	Exercise scare stations. 0930 leaving station to collect mail.	
0935	Armament & magazines inspected.	
0945	First heat Rounds Correct. 1000. Heavy speed 5.5 knots.	
1030	Stand easy. 1045 Out port.	
1110	Up spirits. 16.20 Mail received from Antigonish.	
1120	Resuming station - 1205 in station X.	
1200	A/S 70-70 all Radar all around. Watch relieved.	

Position	Latitude	Longitude	Depending on	Currents experienced	Oil Fuel Percentage	Expenditure	Food Water	Expenditure
0800					353.7	54.7	29.7	
1200	44° 29'	60° 09'	LORAN				20.1	11 km
2000								

1235	All gyro repeats correct - 108 Revs. - ARL Plot started on clock. Convoy speed 5.5 kn.	
1330	Warning lights checked to investigate contact.	
1343	Resuming station - contact fish.	
1430	All guns trained, elevated, depressed thru full limits.	
1500	Scare stations exercised. D/C firing clock & buzzers tested & correct.	
1600	A/S equipment inspected.	
1615	Watch relieved. A/S 70-70 relative. Radar all around.	
1619	Gyro repeats correct. 1621 Test action bells. 1624 H1A + H2C firing clock correct.	
1700	Position 7W must be. Communications equipment inspected. M1C D/C firing clock correct.	
1720	Exercise scare stations. 1721 Resuming station. 1746 light correct.	
1725	Ship departed. 1746 Resuming station & signal lights correct.	
1830	Exercise scare.	
1900	All guns trained & elevated thru limits, communications correct.	
2015	Watch relieved. A/S sweep 70-70. H2C every third sweep. Radar all around.	
2030	First heat Rounds correct.	
2030	All gyro repeats checked - 10.45. Too rough to exercise scare stations.	
2115	Light power reported correct.	
2215	All guns elevated & trained to full limits.	
2415	A/S 70-70 H2C every 3rd sweep. Radar all around. 2415 Watch relieved.	



Time	Log (stating type)	Distance Run		Mean Revs. per Minute	True Course	Gyro Compass Course	Standard Compass Course	Deviation	Variation	Wind		Weather and Visibility	Sea and Swell	Corrected Barometric Pressure in Millibars	Temperature °F			
		Miles	Tenths							Direction (true)	Force (0-12)				Dry Bulb	Wet Bulb	Sea	
0100																		
0200																		
0300																		
0400				963	086	086	568E	-	26W	S	4	R4	34	1004	44		36	
0500																		
0600																		
0700																		
0800				108	086	086	570E	2E	26W	SE	2	Y6	22	1005	44		36	
0900																		
1000																		
1100																		
1200				126.4	262	261	572W	1W	25W	W	2	Y5	22	1001	40		36	

Number on Sick List	Distance run through the Water	Zone Time kept at noon	Leave Granted to Ship's Company		Anchor Bearings
	287	+3			

1300																		
1400																		
1500																		
1600			1301	262	263	N69W	4W	25W	WNW	4	C7	23	1000	36		34		
1700																		
1800																		
1900																		
2000			1348	262	263	N62W	6W	24W	NW	4	C7	23	1001	30		35		
2100																		
2200																		
2300																		
2400			1385	258	259	N74W	4W	24W	WNW	3	C6	22	1002	25		34		

REMARKS

0020 All gyros check and found correct

0100 Ship pounding and heaving taking some water over fore - life locker clear

0130 Too rough to exercise sea stations

0200 Low power reported correct -

0300 All gun trained and elevated thru full limit - Communications correct.

0415 Watch relieved. At 80-80 relative every 3rd all around HE. Radar all around  
In company with E.G. 16, W7 escorting SC 165.

0430 Gyro repeats correct. 0445 Warning buzzers firing checked

0510 Phoenix engine rooms & quarterdeck defective

0630 Call the bands. 0650 KIRKLAND LAKES. RADAR HAS KEA

0705 Exercised. Sease Stations. Watch relieved.

0830 Leaving station to pass Springfield ahead of company. 0930 - In company with group

0930: Gyro 262.5. Speed 7 knots in order of that number 35143.

0945 - First Huntarts Rounds checked. 0947 Gyro broken down, steering magnet

1002 - Sease stations. 1002 Sease - quarters clean gyro

1015 Ammunition & magazine inspected. 1015 action of gyro.

1145 upsert

1215-1250. Radar all around. Steering magnet & compass 3 miles ahead Springfield

Position	Latitude	Longitude	Depending on	Currents experienced
0800				
1200	45° 05'	57° 59' W	LORAN	
2000				

Oil fuel 330.1 tons  
 Petroleum 51.1 tons  
 Explosives 23.6 tons  
 Fresh water 23.2 tons  
 Expended 12. tons

1400 Sease stations exercised. D/C firing check & buzzers checked &

1443 Gyro repaired. 1430 D/C and A/H equipment inspected. All found correct

1449 Taking up station with group - standard wing

1753 Passed Sons bay port side. In Company with E.G. 16

1615 Watch relieved. At 80-80 relative. Radar all around.

1640 Navigational and 115-mile marker lights correct. Action bells correct

1642 Exercised sease stations. 1650 Gyro repeats checked

1655 D/C firing check and buzzers checked and found correct

1700 Recognition lights raised. 1700 Ship darkened. 1800 Exercise action stations

1800 A/H equipment inspected &

1845 All guns trained and elevated to full limits. Communications correct

1950 Exercising sease stations. 1700 Bunks on lower mustered. Communication equipment inspected

2015 Watch relieved. At 70-70 HE every third around - Radar - all around

2015 Gyro repeats checked and correct

2030 Exercised sease stations in Huntarts Roads Course

2054 Gyro 258

2055 ATC 258. 2056. 2057. 2058. 2059. 2060. 2061. 2062. 2063. 2064. 2065. 2066. 2067. 2068. 2069. 2070. 2071. 2072. 2073. 2074. 2075. 2076. 2077. 2078. 2079. 2080. 2081. 2082. 2083. 2084. 2085. 2086. 2087. 2088. 2089. 2090. 2091. 2092. 2093. 2094. 2095. 2096. 2097. 2098. 2099. 2100.

2305 All guns elevated & trained to full limits. Communications checked & correct

2310 Items applied to self-armorment and to vessel

2415 ATC 258. 259. 260. 261. 262. 263. 264. 265. 266. 267. 268. 269. 270. 271. 272. 273. 274. 275. 276. 277. 278. 279. 280. 281. 282. 283. 284. 285. 286. 287. 288. 289. 290. 291. 292. 293. 294. 295. 296. 297. 298. 299. 300.











Time	Log (stating type)	Distance Run		Mean Revs. per Minute	True Course	Gyro Compass Course	Standard Compass Course	Deviation	Variation	Wind		Weather and Visibility	Sea and Swell	Corrected Barometric Pressure in Millibars	Temperature °F			
		Miles	Tenths							Direction (true)	Force (0-12)				Dry Bulb	Wet Bulb	Sea	
0100																		
0200																		
0300																		
0400				136	272	272	567W	2E	23W	NW	2	6-8	12	1020	20		34	
0500																		
0600																		
0700																		
0800										NW	1	6-8		1010				
0900																		
1000																		
1100																		
1200										NW	1	5-8		1024				

Number on Sick List	Distance run through the Water	Zone Time kept at noon	Leave Granted to Ship's Company	Anchor Bearings
0		+3.	1500 leave for rest & clean watches from 1520 to 0700 Sunday till Monday change P.O. 0730 watchkeepers 1030	

1300																		
1400																		
1500																		
1600										SW	1	6-8		1022				
1700																		
1800																		
1900																		
2000										SW	1	6-8		1021				
2100																		
2200																		
2300																		
2400										SW	1	6-8		1018				

REMARKS	Initials of the Officer of the Watch
0025 All gyros correct - 0053 Radar contact 12500' - investigated & found to be a Merchant Vessel 0130 Egg Is. 11. bore 355° - Teddore Is. 11. bore 322° 0145 All gyros trained & elevated thru full limits - Communications correct. 0230 Leave station enroute. D/C clock & buzzers tested & correct. 0300 Sound signal light bore 247° Teddore rock light bore 053° 0307 Proceeding to take up position D' conveyor and line ahead 0415 Watch relieved. Scanning std line of comm. 23. comes & proceeds into harbor in company 0425 108 revs. (und EC 167) 4/6 70-70 every 5' all around N.E. Radio 0430 90 revs. 0438 all gyro repeaters checked. 0442 Cut gen recovered. 0448 1/2 warning buzzers & 1/4 warning firing clock correct. 0516 A buoy alarm std. 9c 337° 0533 Main R.R. 15. ahead 1 cable to port. 0538 1/4. Huc bank buoy beam st. cable - 50 Revs. 0546 Forward gate upwards - 136. Revs. 2152 Rev. 15. Lt. 1/2 to st. cable 0630 Tied up at S.N.R.O. 0700 Hands to Breakfast 0740 Charlottemun scanned along side 0750 Out pipes Watch relieved. CB 0815 Hands fall in. 0830 White Watch returns. all loan clothing 0845 Ammunition magazines inspected 0900 Colours 0910 Blue watch returns. all loan clothing. 0940 Red watch returns commencing 1030 Stand down. 1040 Church party to Muster. 1045 Red Pipes. 1200 1/2. 40 up parts 1200 Baggy to dinner. 1130 Stand up. Red watch returns. Watch relieved. MND	CB MND

Position	Latitude	Longitude	Depending on	Currents experienced
0800				
1200				
2000				

1300	Hands fall in. 1330 Prev. Range HC 203. Alongside Shark He down. Precision range HC 203 stopped 1420	
1410	Charlottemun departed 1415 Precision Range HC 203	
1530	Liberty boat passed	
1600	Watch relieved 1630 Liberty boat	J.D.
1730	Hands to supper Liberty boat	
1804	Colours 1830 Liberty boat	
1915	Duty watch to muster clean up for rounds 1940 HC 264 along side	
2000	Watch relieved Liberty boat	J.D.
2100	Rounds correct. 2120 Precision Range 203 along side. HC 203 stopped at 2135	J.D.
2223	Unaided boat passed 2230 Pipe down	
2355	Heal along side	
2400	Watch relieved 0002 HC 264 stopped.	J.D.



Time	Log (stating type)	Distance Run		Mean Revs. per Minute	True Course	Gyro Compass Course	Standard Compass Course	Deviation	Variation	Wind		Weather and Visibility	Sea and Swell	Corrected Barometric Pressure in Millibars	Temperature °F			
		Miles	Tenths							Direction (true)	Force (0-12)				Dry Bulb	Wet Bulb	Sea	
0100																		
0200																		
0300																		
0400										W.	1	B6		1016	26			
0500																		
0600																		
0700																		
0800										NW	1	S6		1015	30			
0900																		
1000																		
1100																		
1200										NW	1	S5		1028	34			

Number on Sick List	Distance run through the Water	Zone Time kept at noon	Leave Granted to Ship's Company	Anchor Bearings
0		+3	White watch 1130 to 1130 24/1/45 Red watch 1630 to 0700 Chief POs 0720 Watchkeeper 1030 Also watch keeper	

1300																		
1400																		
1500																		
1600										NW	1	S5		1012	36			
1700																		
1800																		
1900																		
2000										NW	0	B67		1012	35			
2100																		
2200																		
2300																		
2400										NW	0	B67		1008	36			

Time	REMARKS	Initials of the Officer of the Watch
0130	Hands correct	JK
0400	Hands correct. Watch relieved	JK
0630	Hands correct - Hands correct	JK
0700	Hands to breakfast 0750 out pipes	
0800	Hands free in 0814 higher along side 0925 clear lower deck, down minutes	
1005	HO235 alongside 1014 HO235 slipped	
1115	Dr spirits 1130 afternoon watch to dinner	
1200	PM 9 Messing relieved Hands to dinner	JK

Position	Latitude	Longitude	Depending on	Currents experienced
0800				
1200				
2000				

1220 Re-ammunitioning completed all magazines empty Ammunition inspected  
 1235 H.C. 3 alongside with flour duty watch material to be used  
 1300 Blacklistman mustered. 1325 H.C. 300 supplies aboard.  
 1355 out pipes  
 1400 H.C. 203 alongside Hands fallen 1410 H.C. 203 slipped.  
 1450 White Watch muster for dinner. 1520 H.C. 330 alongside & slipped  
 1530 Clear lower deck for general payment  
 1600 Gene piped White watch Liberty men Watch relieved JK  
 1630 Liberty men fall in 1700 Blacklistman muster  
 1730 Hands to supper Liberty boat 1830 Liberty boat  
 1900 Fire stations exercised 1945 1st drafted aboard JK JK  
 2000 Watch relieved Liberty boat JK  
 2100 Hands correct JK JK  
 2225 Hands of 087 impacted but challenged JK JK  
 2400 Hands correct. Watch relieved JK











H.M.C.S. *Stetler*

Thursday 25 of January

19 45 From

to

and at Halifax N.S.

Time	Log (stating type)	Distance Run		Mean Revs. per Minute	True Course	Gyro Compass Course	Standard Compass Course	Deviation	Variation	Wind		Weather and Visibility	Sea and Swell	Corrected Barometric Pressure in Millibars	Temperature °F			
		Miles	Tenths							Direction (true)	Force (0-12)				Dry Bulb	Wet Bulb	Sea	
0100																		
0200																		
0300																		
0400										NW	1	b7		982	20			
0500																		
0600																		
0700																		
0800										NW	1	b7		982	16			
0900																		
1000																		
1100																		
1200										NW	1	b7		987	20			

REMARKS

0400 Rounds correct QM & Messenger relieved MK

0630 Call the hands - Prisoner started

0700 Hands to Breakfast

0750 - Out pipes  
0800 - Hands fall in. Rounds correct watch relieved JPC

0800 - Hands clean mess & tables on ammunition table

0900 Colour vs 0915 Ab cat 199 to clean into rig of day. 0930 Colour prisoner fall in  
0930 Lights adjusted to ammunition ship  
0940 Clear lower rig. Del. x-men.

1130 Afternoon watch to Dinner 1140 Up Spits  
1235 Lighter shipped MK

1200 Hands to Dinner. QM & Messenger relieved JPC

Number on Sick List	Distance run through the Water	Zone Time kept at noon	Leave Granted to Ship's Company		Anchor Bearings
			HEAVE FOR RED WATCH 1315 - 0700.	WHITE WATCH 1630 - 0700.	
0			Q.P.O.'s 0730	WATCH KEEPERS 1030.	

Position	Latitude	Longitude	Depending on	Currents experienced
0800				
1200				
2000				

1300																		
1400																		
1500																		
1600										NW	1	B7		987	16			
1700																		
1800																		
1900																		
2000										NW	3	B7		990	12			
2100																		
2200																		
2300																		
2400										NW	2	B7		990	10			

1305 Out pipes 1310 HANDS FALL IN DETAINED TO WORK 1330 LIBERTY MEN FALL IN

1430 Liberty men fall in

1545 Return gear cleanup decks 1550 secure

1600 QM & Messenger relieved 1630 Liberty boat JPC

1730 Liberty boat

1830 Sunset 1830 Liberty men 1830 Duty watch mustn't bring stores aboard

1920 Cleanup gear rounds

2000 Liberty boat - Watch relieved MC alongside JPC

2000 Rounds correct

2230 Pipe down

2400 QM & Messenger relieved Rounds correct JPC



H.M.C.S. *STETTNER*

*FRI* day

*26<sup>th</sup>* of

*JANUARY*

19 *45*

From

to

, and at *HALIFAX*

Time	Log (stating type)	Distance Run		Mean Revs. per Minute	True Course	Gyro Compass Course	Standard Compass Course	Deviation	Variation	Wind		Weather and Visibility	Sea and Swell	Corrected Barometric Pressure in Millibars	Temperature °F			
		Miles	Tenths							Direction (true)	Force (0-12)				Dry Bulb	Wet Bulb	Sea	
0100																		
0200																		
0300																		
0400										NW	2	Bc1		988	6			
0500																		
0600																		
0700																		
0800										NW	2	Bc1		989	5			
0900																		
1000																		
1100																		
1200										NW	2	Bc1		984	12			

Number on Sick List	Distance run through the Water	Zone Time kept at noon	Leave Granted to Ship's Company	Anchor Bearings
			<i>White &amp; Blue watches</i>	
0		+3		

1300																		
1400																		
1500																		
1600										NW	6	Bc7		984	16			
1700																		
1800																		
1900																		
2000										NW	2	Bc6		982	12			
2100																		
2200																		
2300																		
2400										NW	2	Bc6		982	12			

REMARKS	Initials of the Officer of the Watch
<i>0100</i> 0100 rounds correct.	<i>Sub</i>
<i>0353</i> Guard Boat passed.	
<i>0400</i> 0400 rounds correct watch received - 0405 Rounds Correct.	<i>J.D.P.</i>
<i>0630</i> Call the hands Prisoner called - 0645 Rounds Correct.	<i>Sub</i>
<i>0700</i> Hands to Breakfast. <i>0750</i> Out papers <i>0755</i> Hands fall in.	
<i>0800</i> Q.M. Messenger relieved Rounds Correct.	<i>J.P.C.</i>
<i>0900</i> Colours	
<i>1030</i> Provisions brought aboard	
<i>1115</i> up papers <i>1130</i> afternoon watch secure	
<i>1200</i> secure	
<i>1200</i> watch received <i>1230</i> Blacksmiths to Muster.	<i>A.D.</i>

Position	Latitude	Longitude	Depending on	Currents experienced
0800				
1200				
2000				

<i>1310</i> Out pipes 12 lb. gun crew to muster to go to gun battery <i>1315</i> Hands fall in standing stores.	
<i>1438</i> Stand Easy. <i>1445</i> Out pipes	
<i>1445</i> White Watch to muster to draw box clothing.	
<i>1600</i> Q.M. & Messenger relieved <i>J.M.A.</i>	
<i>1730</i> hands to supper Liberty boat	
<i>1810</i> sunset	
<i>1830</i> Liberty boat duty watch mustered to bring on supplies.	<i>J.P.</i>
<i>1930</i> Fire stations exercised	<i>J.P.</i>
<i>2000</i> Liberty boat Watch Relieved	<i>O.B.</i>
<i>2100</i> Rounds correct	<i>J.P.</i>
<i>2230</i> Pipe Down. <i>2245</i> Guard Boat secured	
<i>2400</i> Rounds Correct. Q.M. & Messenger relieved <i>J.M.A.</i>	



H.M.C.S. *Stettler*

Saturday 27th of January

19 45

From

to

, and at *Halifax*

Time	Log (stating type)	Distance Run		Mean Revs. per Minute	True Course	Gyro Compass Course	Standard Compass Course	Deviation	Variation	Wind		Weather and Visibility	Sea and Swell	Corrected Barometric Pressure in Millibars	Temperature °F			
		Miles	Tenths							Direction (true)	Force (0-12)				Dry Bulb	Wet Bulb	Sea	
0100																		
0200																		
0300																		
0400										NW	1	b.c.6		981	18			
0500																		
0600																		
0700																		
0800										NW	1	55		982	18			
0900																		
1000																		
1100																		
1200										N	1	c5		987	84			

Number on Sick List	Distance run through the Water	Zone Time kept at noon	Leave Granted to Ship's Company	Anchor Bearings
			0	

1300																		
1400																		
1500																		
1600										NW	1	c.6		990	36			
1700																		
1800																		
1900																		
2000										NW	1	c.6		997	36			
2100																		
2200																		
2300																		
2400										NW	2	B.c.6		1000	36			

REMARKS	Initials of the Officer of the Watch
0100 Hand Boat Passed	
0210 Rounds Correct	AK
0400 Rounds Correct Watch Relieved	AK
0430 Rounds Correct	
0600 Blacklistmen Called 0630 Hands called Blacklistmen	
0700 Hands to Breakfast 0715 Tugs alongside to slip & Pine	
0800 Hands fall in Secured along side Penitentiary	
0820 Penitentiary Shipped 0835 Secured alongside Jolly	
0900 Colours 1000 Ammunition magazines inspected	
0945 First Lieut's Rounds Correct	
1005 Ammunition lighter alongside to ammunition slip	X

Position	Latitude	Longitude	Depending on	Currents experienced
0800				
1200				
2000				

1400 Stokers Liberty Boat 1455 up sprits	
1600 Liberty boat 1630 Blacklistmen Mustered	
1700 Libertymen 1730 Hands to Supper	
1800 Libertymen 1810 Colours	
2000 Libertymen Q.M. & Messenger Relieved	CKK
2100 Rounds Correct	AK
2230 Pipe down	
2400 Rounds correct - Watch relieved	



H.M.C.S.

*Stettin* Sunday day 28 of January

Time	Log (stating type)	Distance Run		Mean Revs. per Minute	True Course	Gyro Compass Course	Standard Compass Course	Deviation	Variation	Wind		Weather and Visibility	Sea and Swell	Corrected Barometric Pressure in Millibars	Temperature °F			
		Miles	Tenths							Direction (true)	Force (0-12)				Dry Bulb	Wet Bulb	Sea	
0100																		
0200																		
0300																		
0400										NW	1	B2		1002	34			
0500																		
0600																		
0700																		
0800										N	2	B7		1005	34			
0900																		
1000																		
1100																		
1200										NNW	1	B7		1015	46			

Number on Sick List	Distance run through the Water	Zone Time kept at noon	Leave Granted to Ship's Company	Anchor Bearings
0			1200-0700 Red & white watches 1200-0730 C & C P O S 1200-1030 Watch Keepers	

1300																		
1400																		
1500																		
1600										NNW	1	b.c.7		1012	42			
1700																		
1800																		
1900																		
2000										NNW	1	b.c.7		1014	38			
2100																		
2200																		
2300																		
2400										N	1	b.c.7		1015	32			

19 45 From \_\_\_\_\_ to \_\_\_\_\_, and at Halifax

REMARKS		Initials of the Officer of the Watch
0100	Guard Boat Hailed	
0150	Tanker alongside	
0130	Rounds correct	ASB
0300	Rounds correct	ASB
0400	Rounds correct Q.M. & Messenger Relieved	CKK
0700	Hands called	
0730	hands to breakfast	
0800	Hands to breakfast	
0800	0800 watch relieved	J.P.
0825	Out Pipes	
0830	Hands fall in	
0900	Colours	
0945	First Lt. Rounds correct	
1030	Church Party Stand Easy	
1045	Out Pipes	
1045	A/C + H.H. equipment inspected	
1045	1045 Ammunition & Magazines inspected	
1115	Up Squads	
1130	1200 Hands to Dinner	
1130	Afternoon to Dinner Q.M. & Messenger Relieved	CKK

Position	Latitude	Longitude	Depending on	Currents experienced
0800				
1200				
2000				

1230	Liberty boat	1315	Liberty boat	
1430	Liberty Boat			
1600	watch Relieved	1630	Liberty men	ASB
1730	Liberty men		Hands to Supper	
1812	Sunset	1830	Liberty men	
1945	Clear up mess decks for rounds			
2000	Liberty men	Q.M. & Messenger	relieved	ASB
2100	Rounds correct - no power			ASB
2210	Guard Boat Passed	2230	Pipe Down	
2400	Rounds correct		Watch Relieved	ASB













































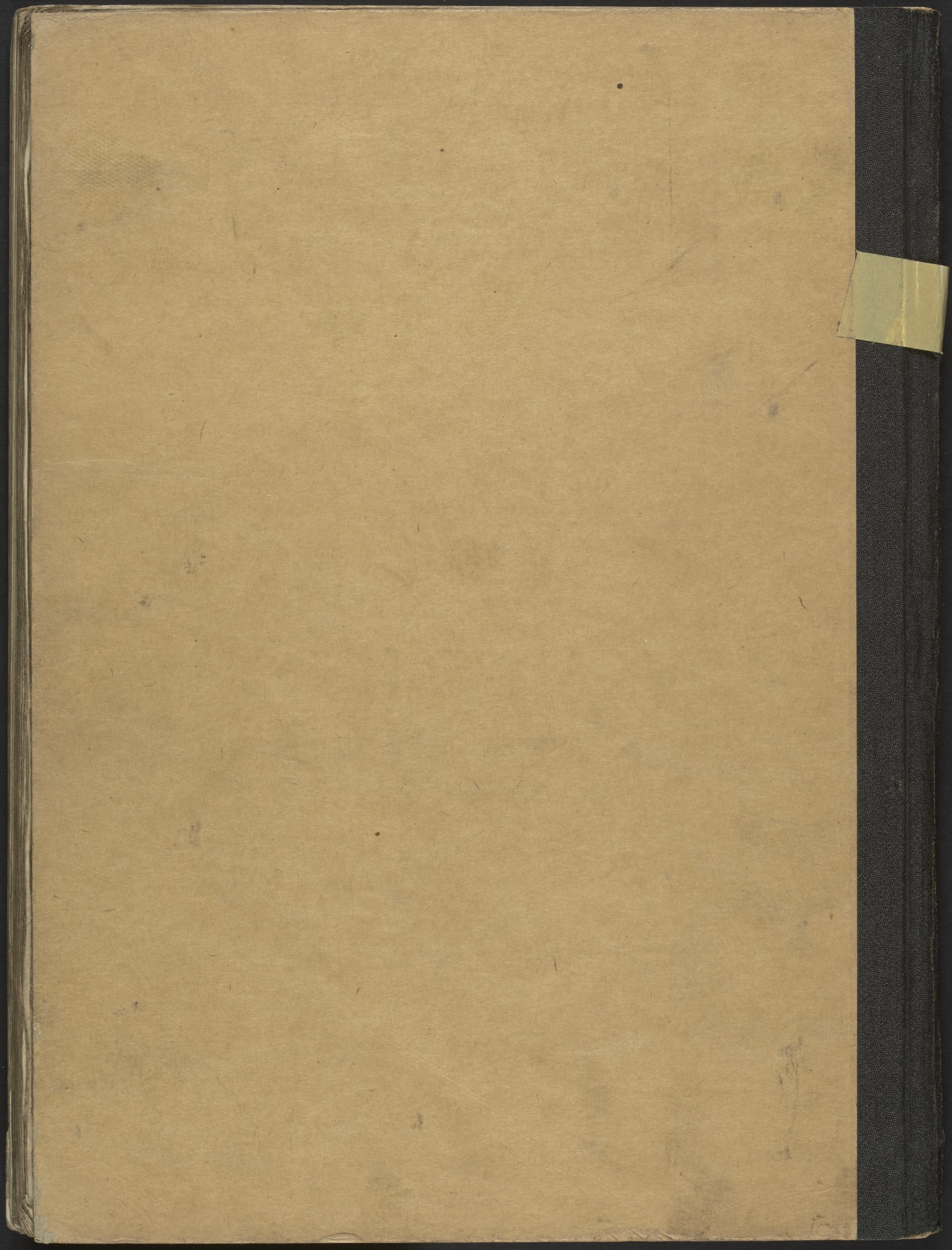
















Library and Archives  
Canada

395 Wellington Street  
Ottawa, ON K1A 0N4

Bibliothèque et Archives  
Canada

395, rue Wellington  
Ottawa, ON K1A 0N4

For material still subject to legislative, contractual or institutional obligations, users warrant that they will respect those obligations and not use LAC collections in a manner that would infringe the rights of others. Liability that may arise in the use of a copy is assumed in full by the user. LAC accepts no responsibility for unauthorized use of collection material by users.

To ensure proper citation and to facilitate relocation of an item, the source of the material and its reference number should always accompany the copy.

Pour les documents faisant encore l'objet d'obligations législatives, contractuelles ou institutionnelles, les usagers s'engagent à respecter ces obligations et à ne pas utiliser les documents des collections de BAC de façon à nuire aux droits d'autrui. Ils doivent assumer entièrement toute responsabilité qui pourrait découler de l'utilisation d'une reproduction de document. BAC décline toute responsabilité quant à l'utilisation non autorisée de documents provenant de ses collections.

Afin de citer un document avec exactitude et d'en faciliter le repérage, sa source et son numéro de référence doivent toujours accompagner la reproduction.

TITLE/TITRE : <b><i>HMCS STETTLER Deck log</i></b>
FILE/DOSSIER : <b><i>22 OCTOBER/44 – 28 JANUARY 1945</i></b>
REFERENCE NUMBER / NUMÉRO DE RÉFÉRENCE: <b><i>RG24 vol. 7885</i></b>
PAGE(S) : <b>93</b>
DATE : <b>21/01/2025</b>